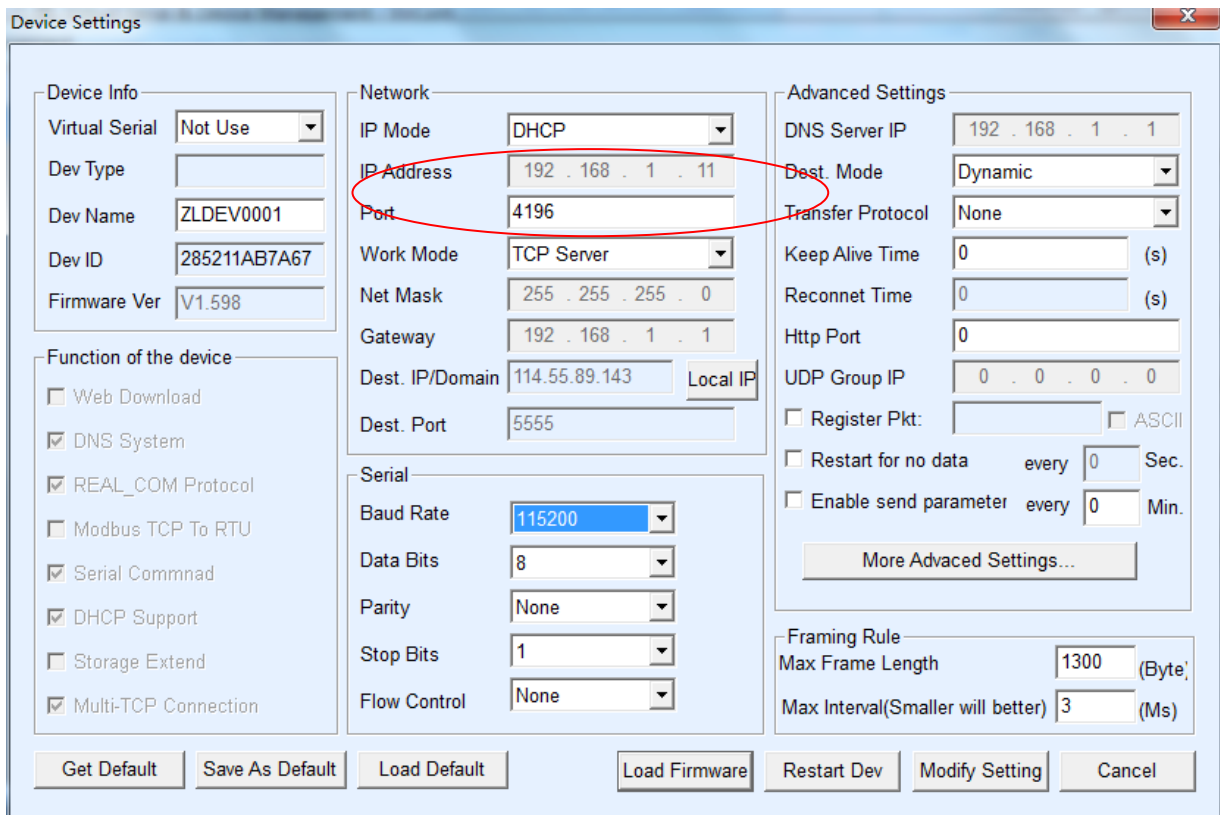


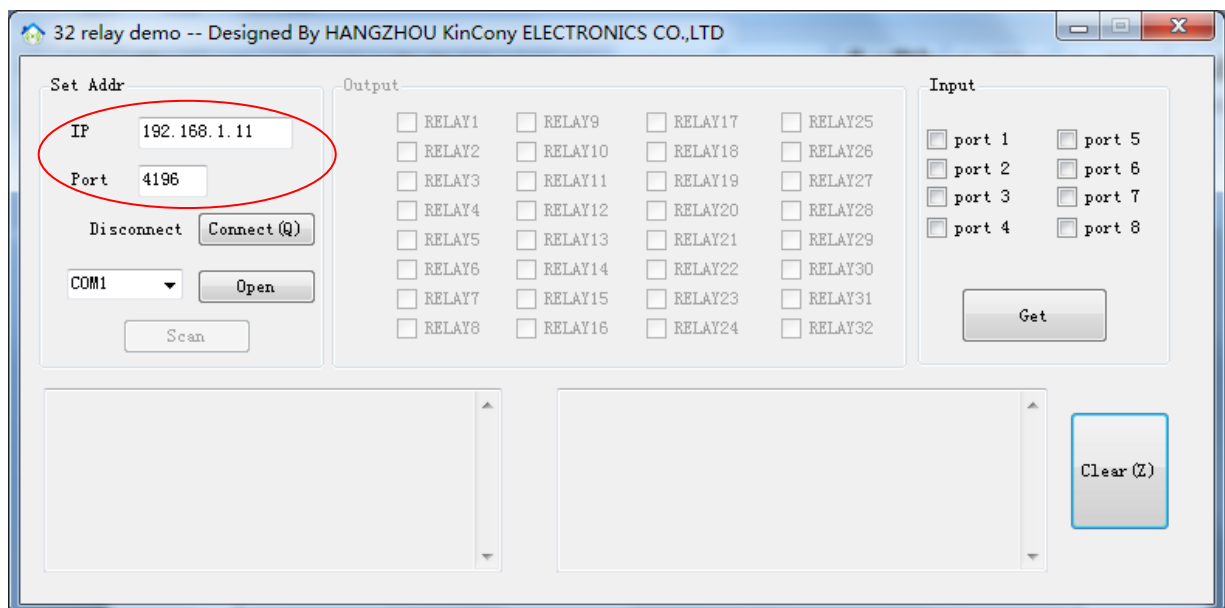
KC868-H8&H32 PC User manual

Firstly, pls have a check if it's TCP mode by the "Vircom" Program(as below)



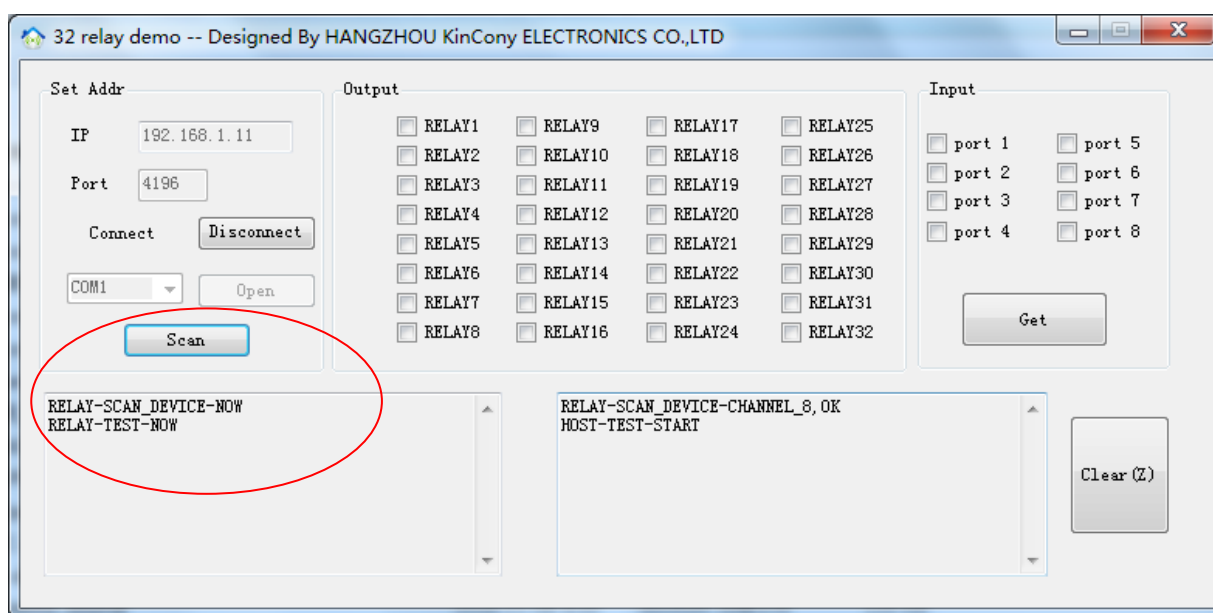
After making sure it is already the TCP mode, then open the "Relay" program

Input IP address and port due to the "Vircom" program, then click Connect button:



After clicking "Connect" button, then click the "Scan" button (see below picture)

When it shows "Relay-Test-Now", you can click the "Output" column to control the device.



When it's H8,click "RELAY1" to "RELAY8";When it's H32,click "RELAY1" to "RELAY32"

