

KC868-H8w Device User Manual (V0508)

I . Software Downloading

II . Device Wi-Fi Config Operation

III. Remote Controlling Operation

1. Mobile APP controlling manual

2. Computer Program controlling manual (WAN mode)

IV. Local Controlling Operation (LAN mode)

I . Software Downloading

1. Use mobile phone to scan the below QR code to download the APP



2. KC868-H8w software (Phone APP QR code, PC Program, Vircom Network Tool) downloading link:

www.kincony.com/download/Disk_KC868-H8w.rar

Please download the file to have the software firstly, as below, it's default you already have and know them.

II . Device Wi-Fi Config Operation (Necessary before any other controlling)

1. Make sure your router has the “DHCP” function or has opened the function

2. To setup the Wi-Fi, one computer with Wireless function is necessary

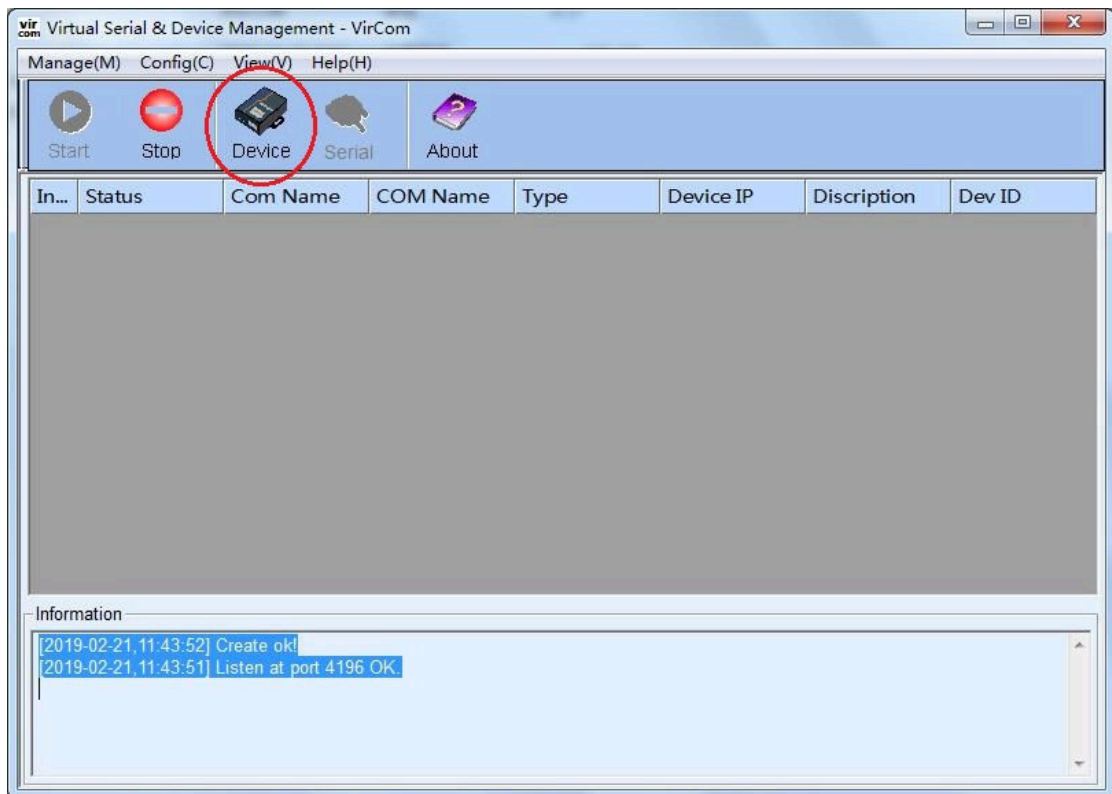
3. Power on the device and install the antenna

4. To set the config of Wi-Fi as below steps:

Step 1: Use your computer to connect the wireless network of “ZLAN”



Step 2: Open the “Vircom Network Tool”  2----VirCom4.88_en_ne and click **【Device】**



Step 3: Click **【Auto Search】** and double click the row



Step 4: Click **【More Advanced Settings】**

Device Settings

Device Info Virtual Serial: Not Use Dev Type: Dev Name: ZLDEV0001 Dev ID: 2850002A0EE3 Firmware Ver: V1.409	Network IP Mode: Static IP Address: 192 . 168 . 1 . 254 Port: 4196 Work Mode: UDP Net Mask: 255 . 255 . 255 . 0 Gateway: 192 . 168 . 1 . 1 Dest. IP/Domain: 114.55.89.143 Local IP Dest. Port: 5555	Advanced Settings DNS Server IP: 192 . 168 . 199 . 1 Dest. Mode: Dynamic Transfer Protocol: None Keep Alive Time: 60 (s) Reconnet Time: 12 (s) Http Port: 80 UDP Group IP: 230 . 90 . 76 . 1 <input type="checkbox"/> Register Pkt: <input type="checkbox"/> ASCII <input type="checkbox"/> Restart for no data every 300 Sec. <input type="checkbox"/> Enable send parameter every 5 Min. <div style="border: 2px solid red; padding: 2px; text-align: center;">More Advanced Settings...</div> Framing Rule Max Frame Length: 1300 (Byte) Max Interval(Smaller will better) 3 (Ms)
Function of the device <input type="checkbox"/> Web Download <input checked="" type="checkbox"/> DNS System <input checked="" type="checkbox"/> REAL_COM Protocol <input checked="" type="checkbox"/> Modbus TCP To RTU <input checked="" type="checkbox"/> Serial Commnad <input checked="" type="checkbox"/> DHCP Support <input type="checkbox"/> Storage Extend <input checked="" type="checkbox"/> Multi-TCP Connection	Serial Baud Rate: 115200 Data Bits: 8 Parity: None Stop Bits: 1 Flow Control: None	

Step 5: Choose "Station" for **【WIFI Work Mode】** , Input your router's name for **【AP/STA SSID】**
 And input your router's password for **【AP/STA SSID】** , then click **【OK】**

More Advanced Settings

WIFI Settings WIFI Work Mode: Station AP/STA SSID: KINCONY1 Encrypt Type: Auto AP/STA Key: XXXXXXXXXX AP Mode Channel: 4 DHCP Server: Disable RJ45 WIFI Relay: Disable	Function Selection <input type="checkbox"/> Modify setting will need key <input type="checkbox"/> Enable receive broadcast <input type="checkbox"/> Enable P2P <input type="checkbox"/> Send MAC when TCP establish <input type="checkbox"/> Detect net using Ping	Multi Dest-IP And Port <table border="1"> <tr><td></td><td>0</td><td>Client Dest.</td></tr> <tr><td></td><td>0</td><td>Client Dest.</td></tr> <tr><td></td><td>0</td><td></td></tr> <tr><td></td><td>0</td><td></td></tr> <tr><td></td><td>0</td><td></td></tr> <tr><td></td><td>0</td><td></td></tr> <tr><td></td><td>0</td><td></td></tr> <tr><td></td><td>0</td><td></td></tr> </table>		0	Client Dest.		0	Client Dest.		0			0			0			0			0			0	
	0	Client Dest.																								
	0	Client Dest.																								
	0																									
	0																									
	0																									
	0																									
	0																									
	0																									
VLAN Settings Enable VLAN: <input type="checkbox"/> VLAN Priority: 0 Net Media Type: Ethernet VLAN ID: 200	Proxy Function Proxy Server IP: 0 . 0 . 0 . 0 Port: 0 <input type="checkbox"/> Need Authentication Name: Key: RS485 Bus Collision Detection Function <input type="checkbox"/> Enalbe. Send data only when RS485 bus is idle for 0 ms Wait max. of 3 (S) before timeout and send if bus always busy	The Advanced Functions Supported <input type="checkbox"/> IO Port Control <input checked="" type="checkbox"/> UDP Group <input checked="" type="checkbox"/> Multit-Dest IP <input type="checkbox"/> Proxy Function <input type="checkbox"/> SNMP Function <input type="checkbox"/> P2P Function																								
Frame End Type: Not Use End Byte: 0x 00	RS485 Multi-Host Support <input type="checkbox"/> Support Maximum wait time of RS485 query command 0 ms (0~8191)																									

Step 6: Choose "DHCP" for **【IP Mode】**, and "UDP" for **【Work Mode】** , keep others unchanging.

Step 7: Click **【Modify Setting】** to return, and then re-power on the device

Wait for approx one minute, the device will be online, the other controlling can be operated.

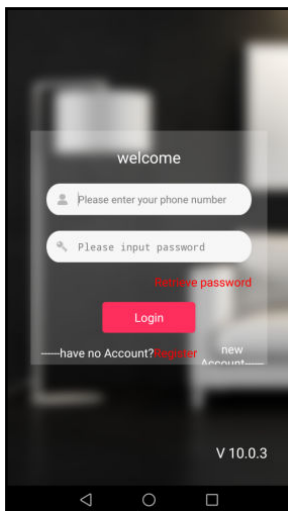
III. Remote Controlling Operation

1. Mobile APP controlling manual

1.1 According to the Wi-Fi config setup, it's necessary to config the Wi-Fi firstly.

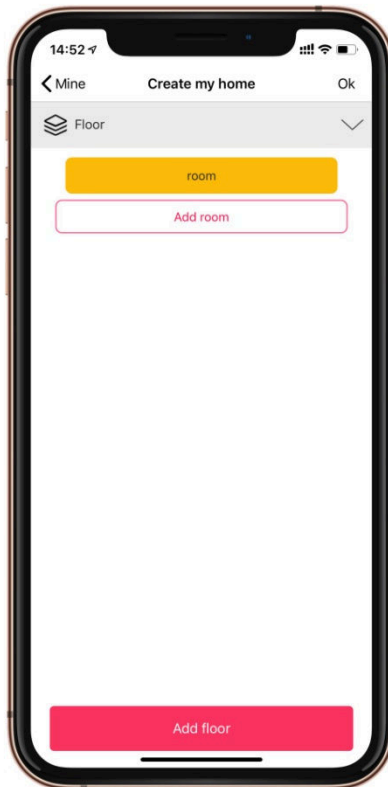
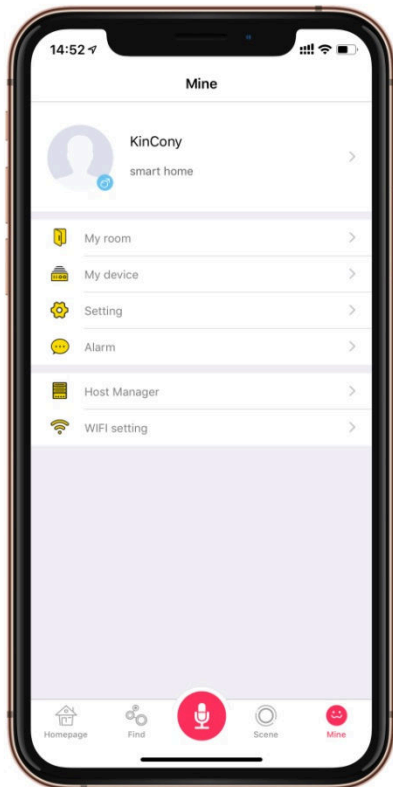
1.2 Register

After downloading and installing the APP, Register your account (11 digits) and password, (Pls make a note for your password in case forgotten).



1.3 Adding device

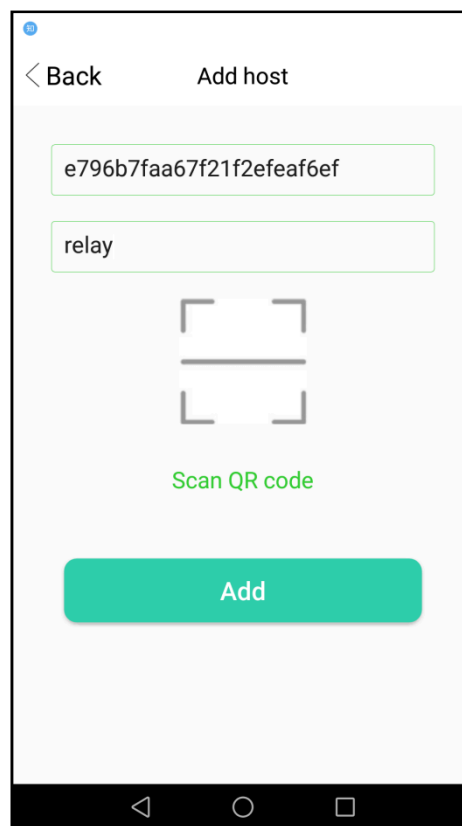
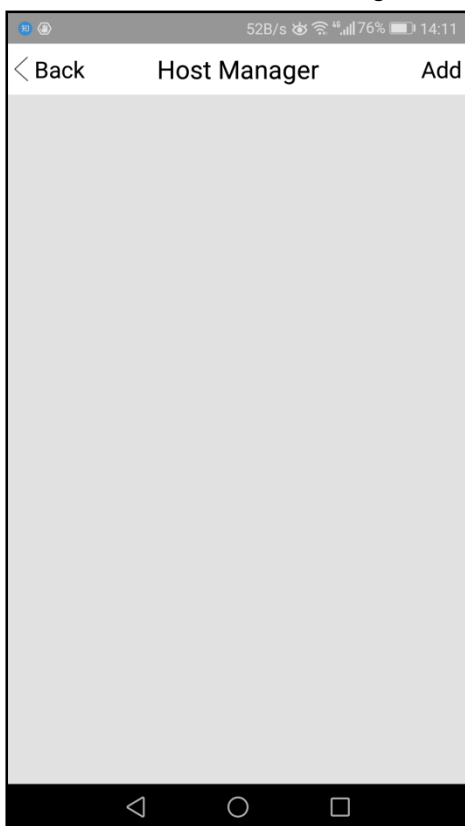
Login in, choose **【Mine】**-**【My Room】**, add floor and room(this step is necessary, please make sure this)



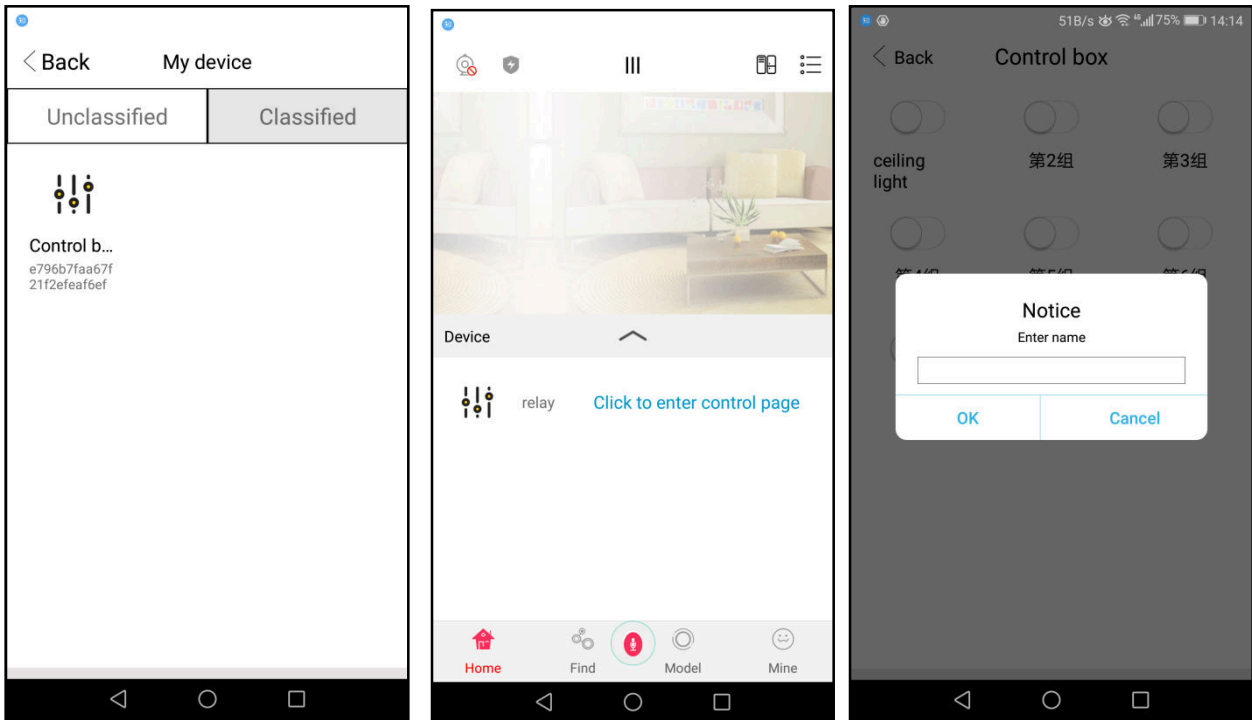
Floor and Room can be renamed randomly, then click **【OK】**

Choose **【Mine】** - **【Host Manager】** ,click **【add】** ,scan the QR code on the device, and input a name.

Click **【Add】** to finish adding device



Click **【Mine】** - **【My Device】** - **【Unclassified】** ,Hold pressing the ICON to choose one room
And give a name for the device.



Hold pressing the number of the relay, the name can be renamed.

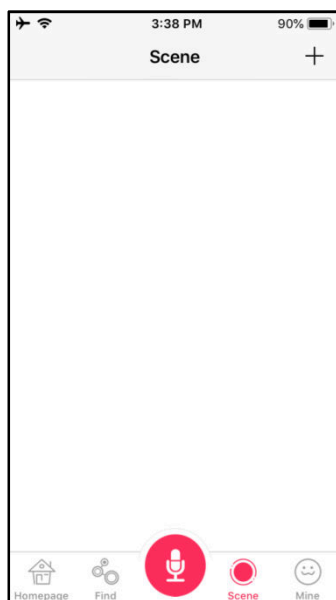
Now adding device is completed, the device can be controlled by mobile APP.

1.4 Create Scene Mode

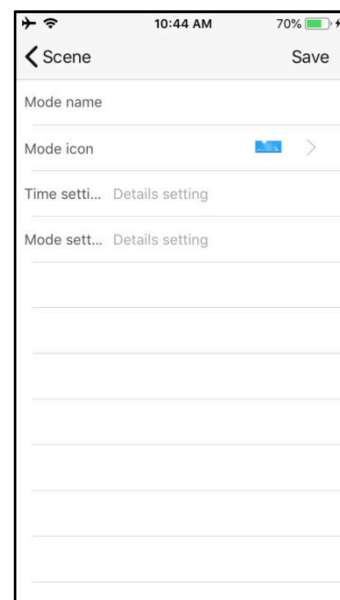
Login in APP, Click **【Scene】** — **【+】** or **【Add】** --Input Mode name, choose Mode icon,

Time setting Optional(Function of timing), at **【Mode setting】**, input the actions you want to control, click**【Save】**;

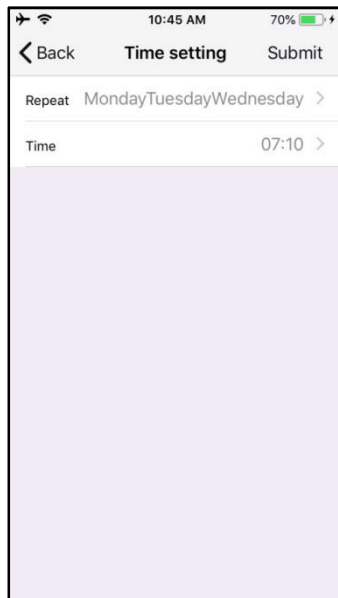
see below pic4-2, pic4-3, pic4-4, pic4-5.



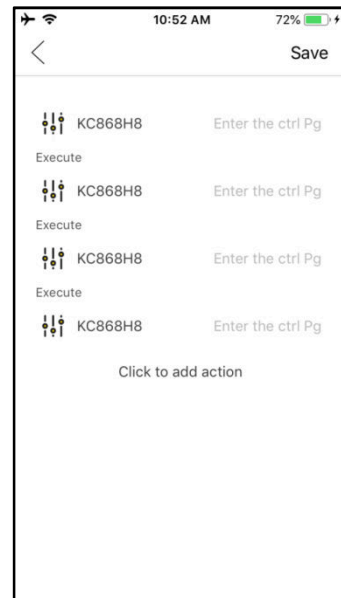
Pic4-2 Add Scene



Pic4-3 Add Scene 2



Pic4-4 Time setting (Optional)



Pic4-5 Mode setting (Actions controlled)

“Mode name” can be named; e.g.: Back Home, Leaving Home, Meeting;

“Mode icon” can be changed;

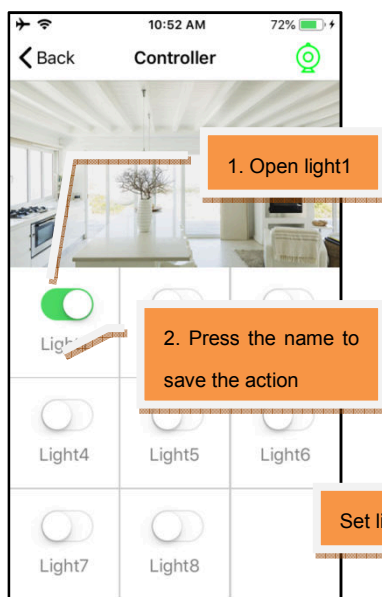
“Time setting” is for timing (optional), Pic4-4, Repeated time: Monday, Tuesday, Wednesday and 7:10 am.

Meaning the scene mode is opened at 7:10 am each Monday, Tuesday and Wednesday.

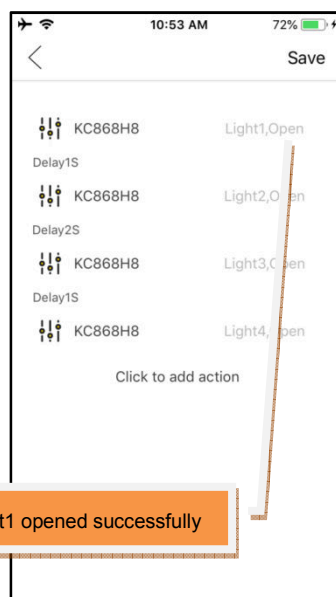
“Mode setting” is for adding the actions required to control

1. Press ‘Click to add action’, choose KC868H8
2. Press [Enter the ctrl pg], you can set the actions, see Pic4-7
 - a. Open light1
 - b. Press the name, it will save the action
3. Press Execute, you can set Delay time
4. Press ‘Save’

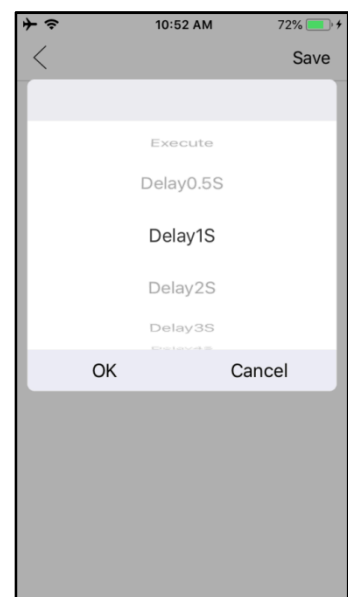
See Pic4-6, Pic4-7, Pic4-8.



Pic4-6



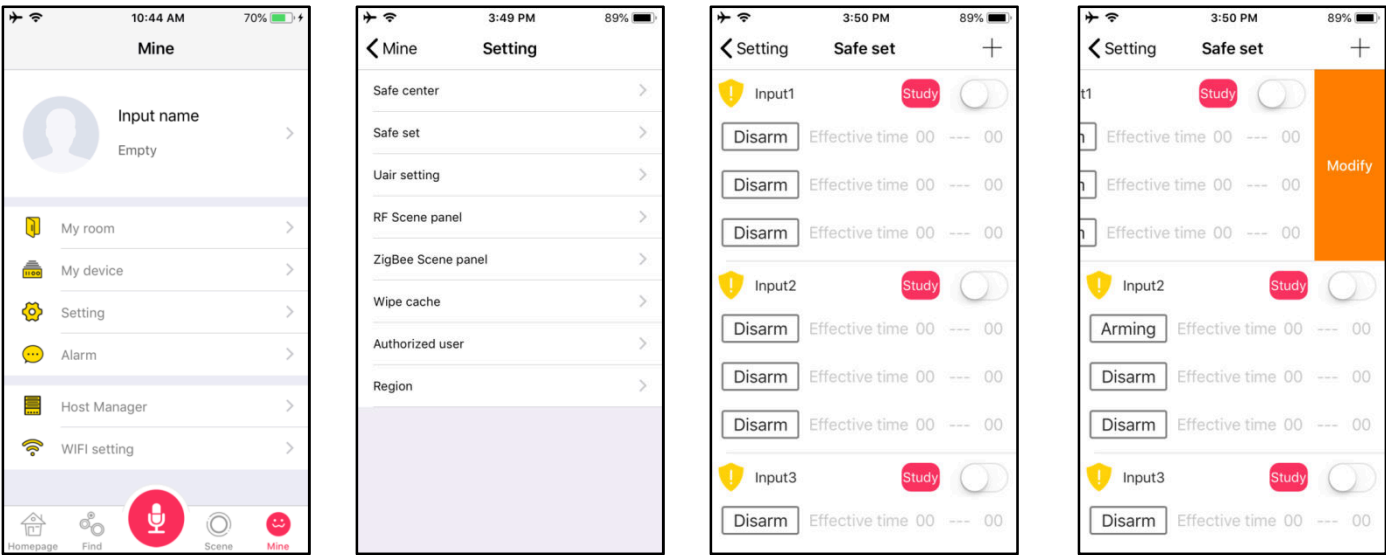
Pic4-7



Pic4-8

II. Inputting terminals trigger linkage of the scene mode

Click **【Mine】** ---- **【Setting】** -- **【Safe set】** ,Hold pressing **【input1】** to left,
The parameters can be modified.



- 【Device name】** : input one name
 - 【Related scene】** click to choose one scene mode to linkage
 - 【Alarm message】** Input message text sent to mobile(setting message allowed);
- When inputting terminals are triggered, the phone will receive **【Alarm message】** ;
- And the actions of the scene mode will be opened.

3:50 PM89%

<

Save

Device name

Input1

Related scene:

Select a trigger scene mode

Alarm message



Safe set

Input1 Study ☒

Start 00 End 23 Arming

Start 00 End 00 Disarm

Start 00 End 00 Disarm

Input2 Study ☒

Start 00 End 23 Arming

Start 00 End 00 Disarm

Start 00 End 00 Disarm

Input3 Study ☒

Start 00 End 23 Arming

Start 00 End 00 Disarm

1、Turn on the alarm button

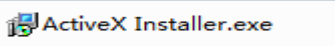
2、Start 00-23 and Arming

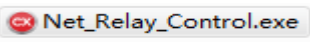
(00-23 means Arming the whole day.

00—08 means Arming from 00:00 to 08:59)

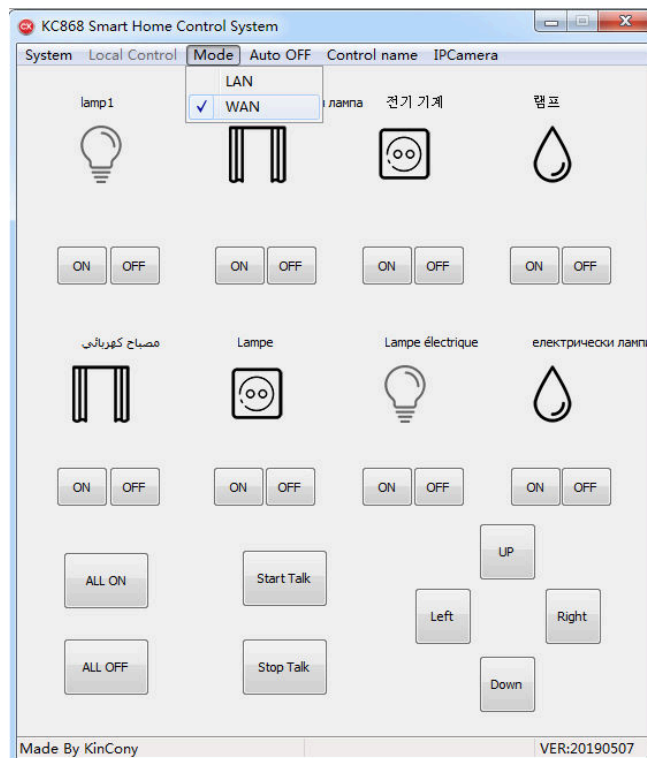
2. Computer Program controlling manual (WAN mode)

2.1 Power on the device and connect the internet cable

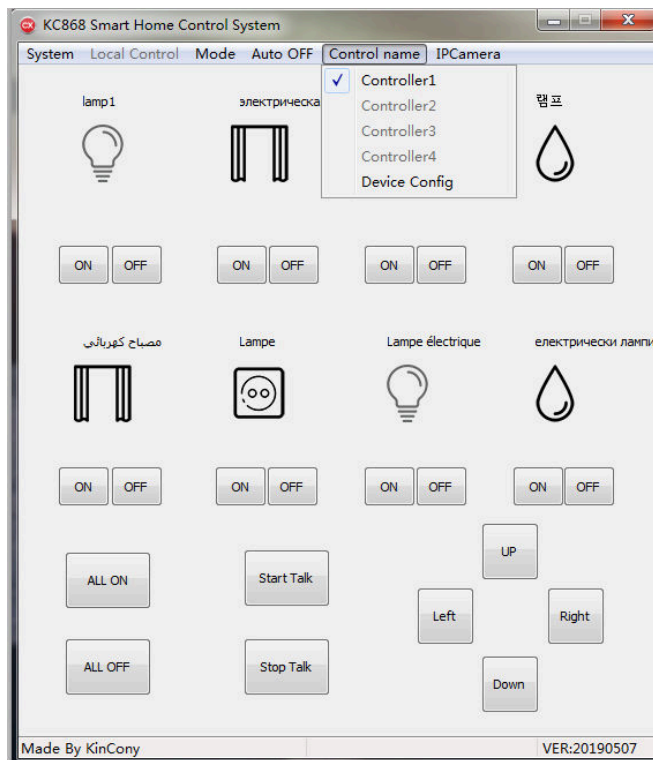
2.2 The first time to use the program, double click  to install the ActiveX Installer.

2.3 Then double click  to open the program and setup the configuration

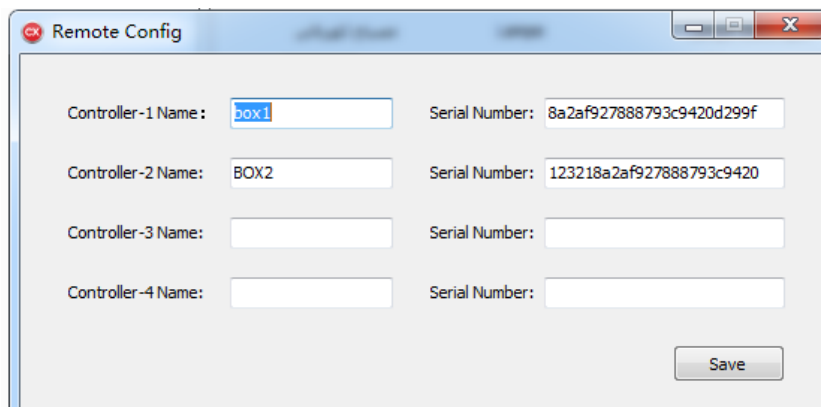
Step 1: Choose 【Mode】 - 【WAN】



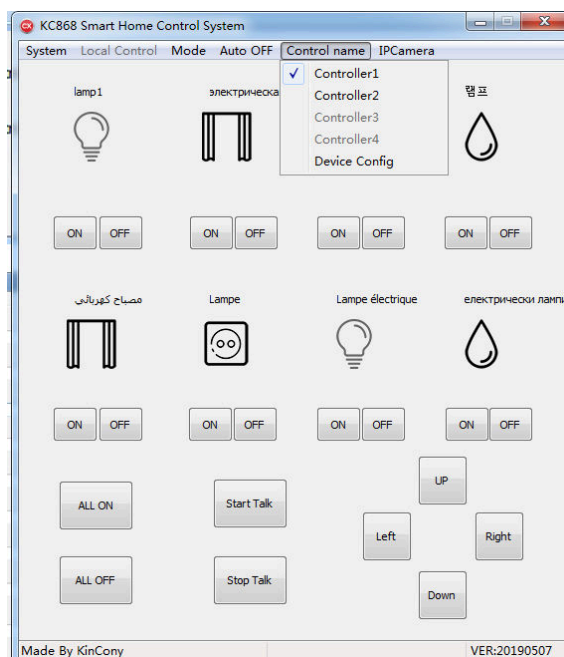
Step 2: click 【Control Name】 - 【Device Config】



Step 3: Input Name and Serial Number of the device, then click **【Save】**
(Serial Number is the 24 digits on the QR code on the device)



Step 4: Choose Controller




2.4 Re-start the program and then choose **【Mode】** - **【WAN】**

Wait for approx one minute, the program can control the device remotely

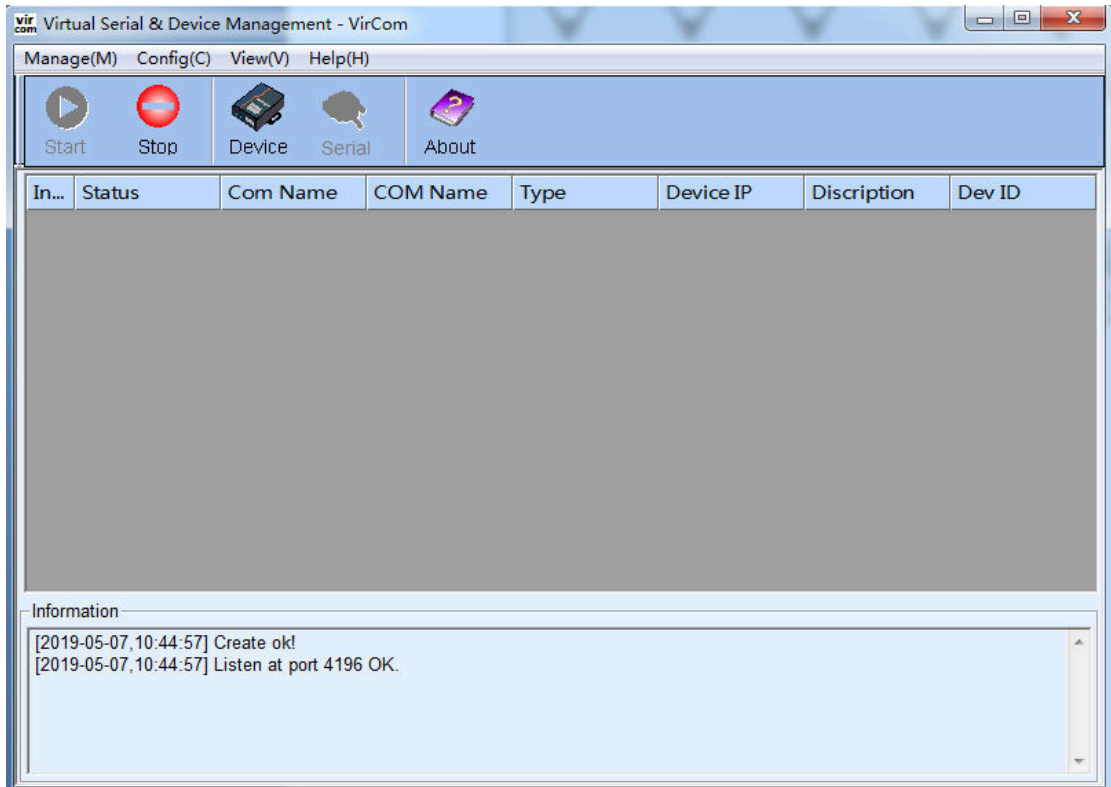
IV. Local Controlling Operation (LAN mode)

1.1 According to the Wi-Fi config setup, it's necessary to config the Wi-Fi firstly.

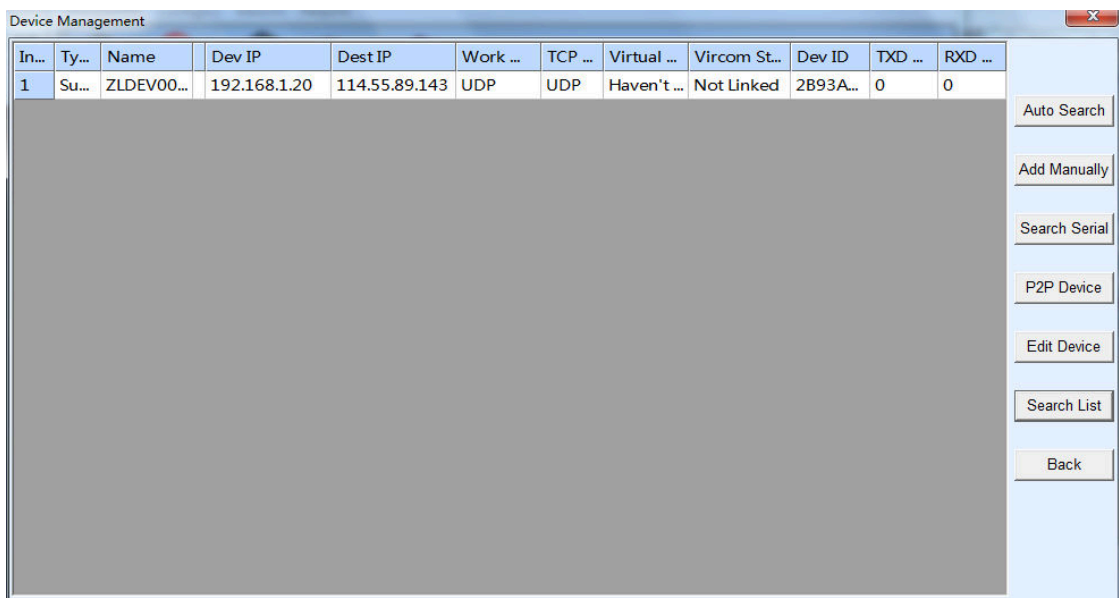
1.2 Make sure your computer and the device are belonging to the same local internet

1.3 Open the “Vircom Network Tool”  2----VirCom4.88_en_ne , and setup the configuration of the device

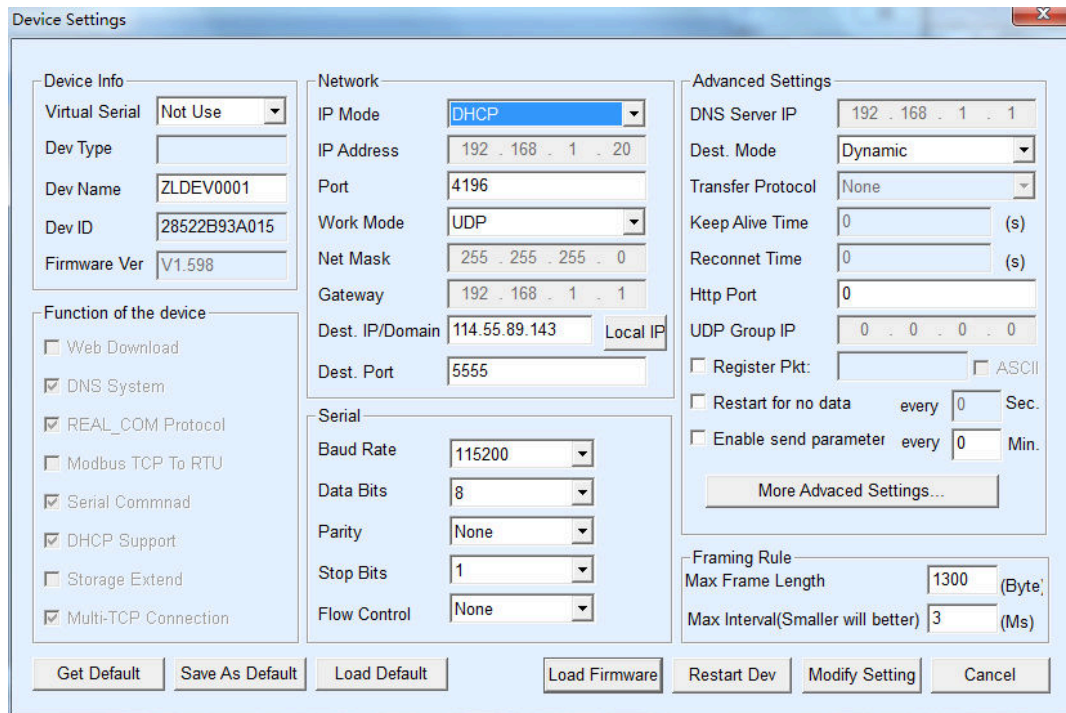
Step 1: Click **【Device】**



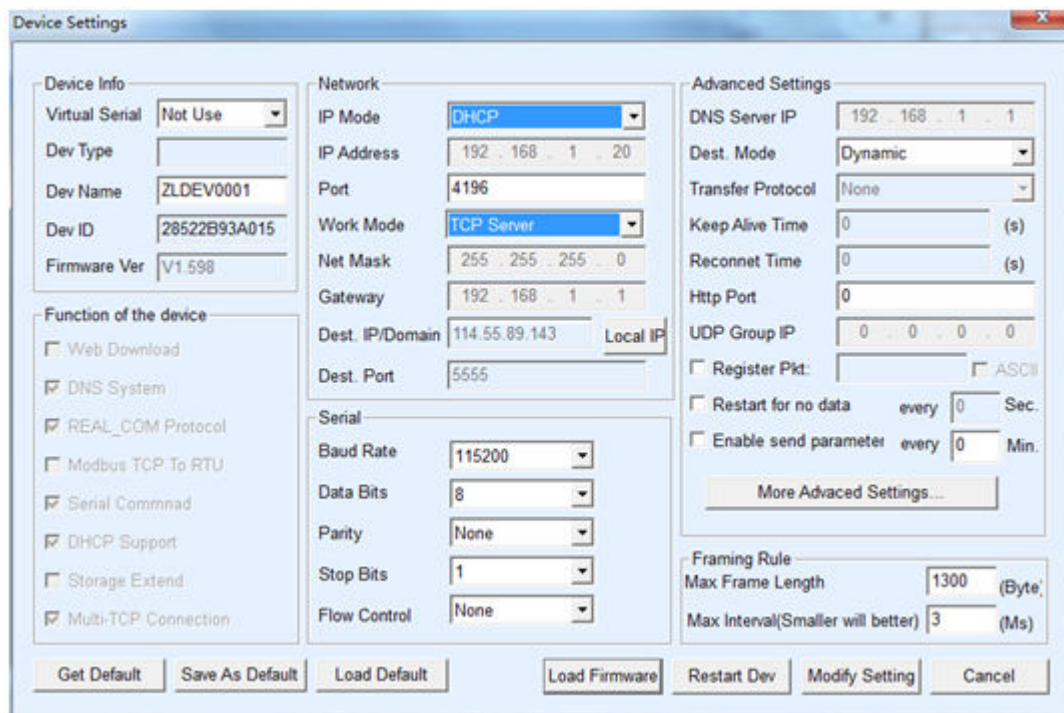
Step 2: Click **【Auto Search】**



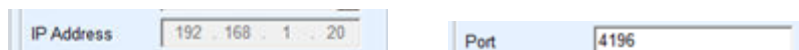
Step 3: Click **【Edit Device】**



Step 4: Choose “TCP Server” for the **【Work Mode】**, instead of “UDP”




Step 5: Make sure keeping the others unchanging, meanwhile remember the IP Address and Port

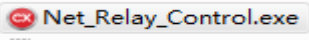


The IP and port will be required as following; you can open the tool and check back when you forget.

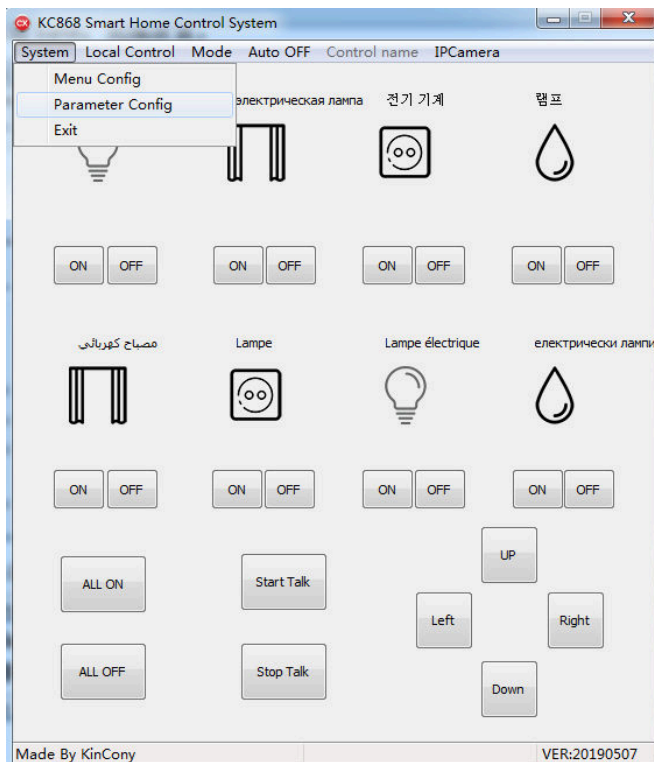
Step 6: Click **【Modify Setting】** to finish the setup, then power off the device and power on again.

You may not close the Vircom network tool program in case you want to check the IP and Port.

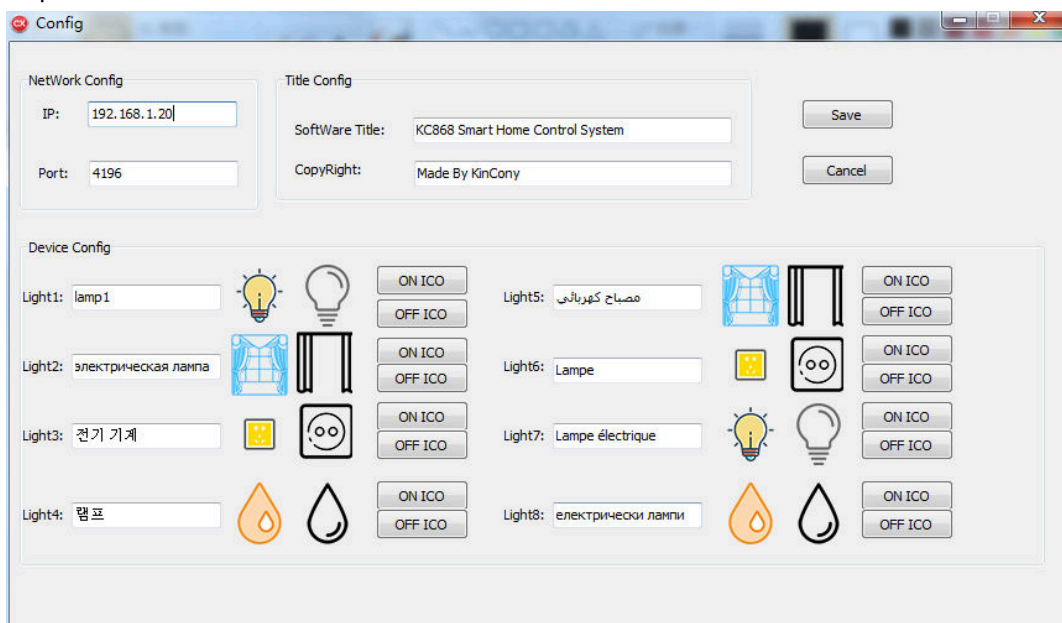
1.4 The first time to use the program, double click  to install the ActiveX Installer.

1.5 Then double click  to open the program and setup the configuration

Step 1: Choose **【System】** - **【Parameter Config】**

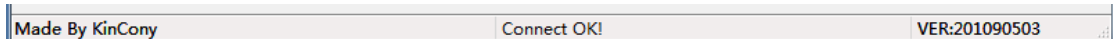


Step 2: Input the IP number and Port number as remembered from the Vircom network tool.

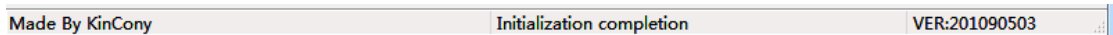


Then click **【Save】** to return

Step 3: Click **【Local Control】** - **【LAN Connect】** , **【Connect OK!】** is showed at the bottom



Step 4: Click **【Local Control】** - **【Initialization】** , **【Initialization completion】** is showed at the bottom



Step 5: Now you can control the device by the program locally.