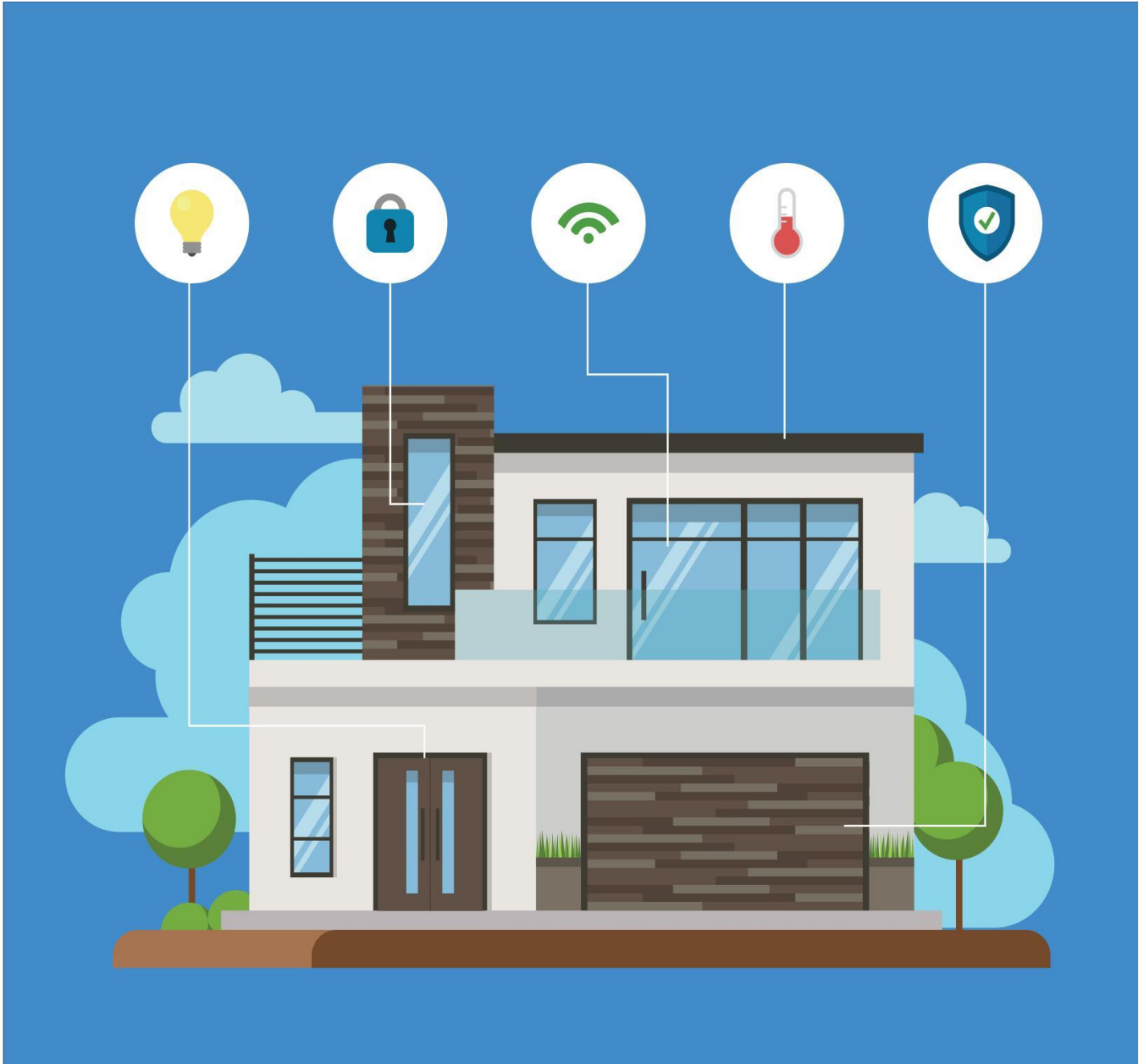


## Introduction of Intelligent Products



## KC868-Hx Smart Relay Controller

|              |       |       |
|--------------|-------|-------|
| KC868-H32    | ..... | P. 03 |
| KC868-H32W   | ..... | P. 04 |
| KC868-H16    | ..... | P. 05 |
| KC868-H16W   | ..... | P. 06 |
| KC868-H8     | ..... | P. 07 |
| KC868-H8W    | ..... | P. 08 |
| KC868-H4     | ..... | P. 09 |
| KC868-H4W    | ..... | P. 10 |
| KC868-H2     | ..... | P. 11 |
| KC868-H2W    | ..... | P. 12 |
| KC868-Hx PDB | ..... | P. 13 |

## KC868 Smart Gateway

|         |       |       |
|---------|-------|-------|
| KC868-G | ..... | P. 14 |
| KC868-S | ..... | P. 15 |

## Wireless Sensor

|            |       |       |
|------------|-------|-------|
| KC-ZSE-101 | ..... | P. 16 |
| KC-ZSE-103 | ..... | P. 17 |

## Wired Sensor

|                           |       |       |
|---------------------------|-------|-------|
| Door Magnet               | ..... | P. 18 |
| Human Infrared            | ..... | P. 19 |
| Smoke Alarm               | ..... | P. 20 |
| Water Leakage             | ..... | P. 21 |
| Fire Module               | ..... | P. 22 |
| Illuminate Module         | ..... | P. 23 |
| Power Down                | ..... | P. 24 |
| T & H Controller Detector | ..... | P.25  |
| IP Camera                 | ..... | P.26  |

## Smart ZigBee Device

|               |       |       |
|---------------|-------|-------|
| Touch Switch  | ..... | P. 30 |
| Curtain Motor | ..... | P. 31 |

## Solutions

P. 32

# KC868-Hx Smart Relay Controller

KC868-H32

## Specification & Parameter

Product Name: KC868-H32 Smart Relay Controller

Product Name: KC868-H32 Smart Relay Controller

Product Model: KC868-H32

Product Size: 272\*117\*40mm

Product weight: 0.75kg

Working Voltage: DC 12V

Material: Fire resistance ABS, metal shell

Working Temp: -20°C ~ +70°C

Working Humidity: 20%RH ~ 80%RH

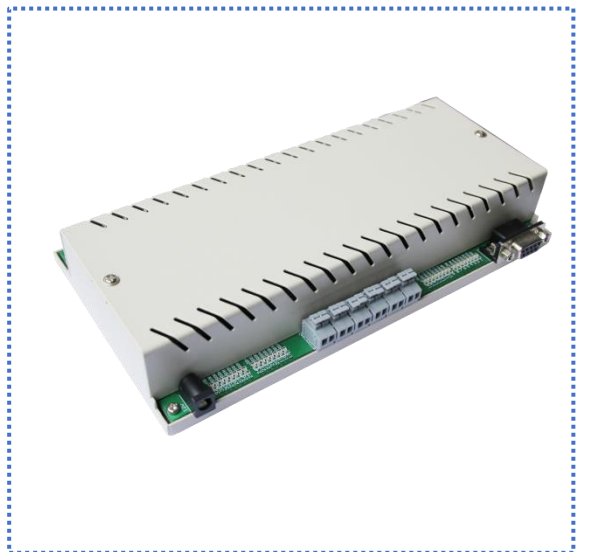
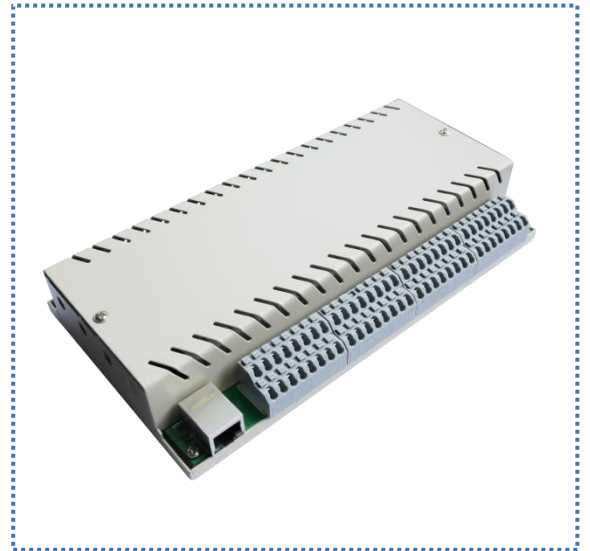
Output Load: Each 250V/5A

Communication mode: Ethernet/RS232

Input port qty: 6 ports

Output port qty: 32 ports

Output power: No



## Function

1. Supporting RS232 and Ethernet communication mode
2. Remote controlling the ON/OFF of 32 routes.
3. Supporting 6 ports input of sensor switching value.
4. Supporting secondary development
5. Supporting APP remote controlling
6. Supporting PC software remote/local controlling
7. Widely used for lights controlling of kinds of occasion (like Indoor, theater or Amusement Park etc) and switching of mechanical equipments, and management of the computers in the cyber bar and so on.

# KC868-Hx Smart Relay Controller

KC868-H32w

## Specification & Parameter

|                     |   |
|---------------------|---|
| Product Name:       | KC868-H32w Smart Relay Controller                   |
| Product Model:      | KC868-H32w  |
| Product Size:       | 272*117*40mm  |
| Product weight:     | 0.75kg  |
| Working Voltage:    | DC 12V  |
| Material:           | Fire resistance ABS, metal shell and rubber antenna |
| Working Temp:       | -20°C ~ +70°C                                       |
| Working Humidity:   | 20%RH ~ 80%RH                                       |
| Output Load:        | Each 250V/5A  |
| Communication mode: | Ethernet/RS232                                      |
| Input port qty:     | 6 ports   |
| Output port qty:    | 32 ports  |
| Output power:       | No  |



## Function

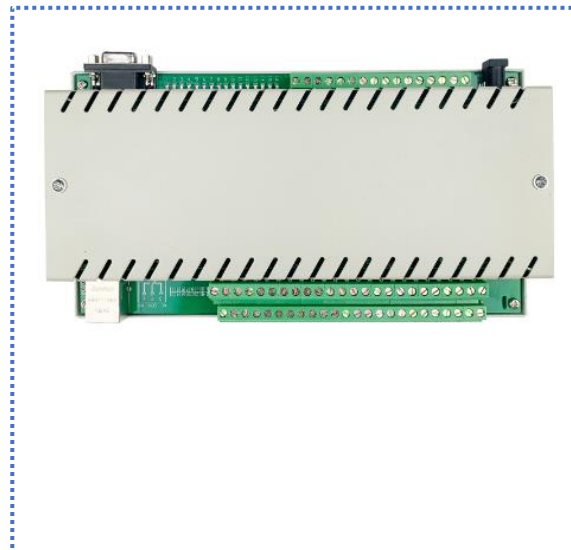
1. Supporting RS232 and Wi-Fi communication mode
2. Remote controlling the ON/OFF of 32 routes.
3. Supporting 6 ports input of sensor switching value.
4. Supporting secondary development
5. Supporting APP remote controlling
6. Supporting PC software remote/local controlling
7. Widely used for lights controlling of kinds of occasion (like Indoor, theater or Amusement Park etc) and switching of mechanical equipments, and management of the computers in the cyber bar and so on.

# KC868-Hx Smart Relay Controller

KC868-H16

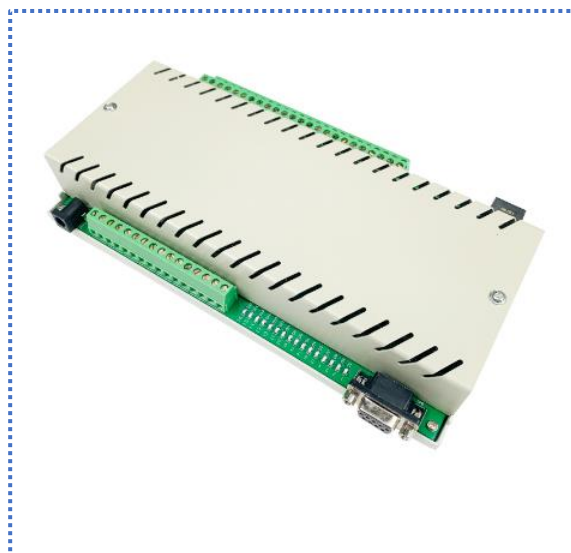
## Specification & Parameter

|                     |                                  |
|---------------------|----------------------------------|
| Product Name:       | KC868-H16 Smart Relay Controller |
| Product Model:      | KC868-H16                        |
| Product Size:       | 272*117*40mm                     |
| Product weight:     | 0.78kg                           |
| Working Voltage:    | DC 12V                           |
| Material:           | Fire resistance ABS, metal shell |
| Working Temp:       | -20℃ ~+70℃                       |
| Working Humidity:   | 20%RH~80%RH                      |
| Output Load:        | Each 250V/10A                    |
| Communication mode: | Ethernet/RS232                   |
| Input port qty:     | 8 ports                          |
| Output port qty:    | 16 ports                         |
| Output power:       | No                               |



## Function

1. Supporting RS232 and Ethernet communication mode
2. Remote controlling the ON/OFF of 16 routes.
3. Supporting 8 ports input of sensor switching value.
4. Supporting secondary development
5. Supporting APP remote controlling
6. Supporting PC software remote/local controlling
7. Widely used for lights controlling of kinds of occasion (like Indoor, theater or Amusement Park etc) and switching of mechanical equipments, and management of the computers in the cyber bar and so on.

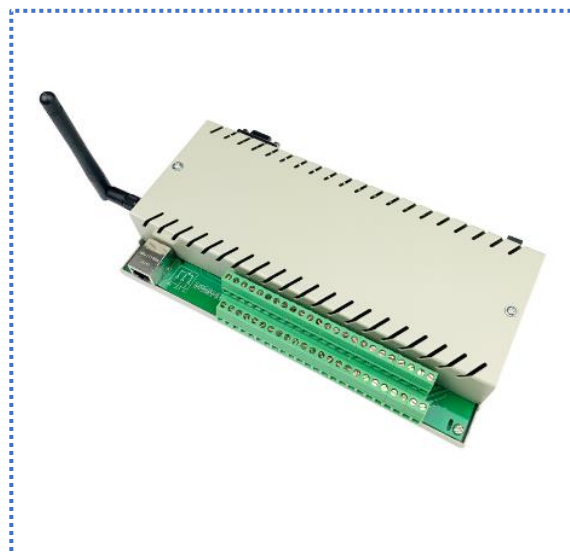


# KC868-Hx Smart Relay Controller

KC868-H16w

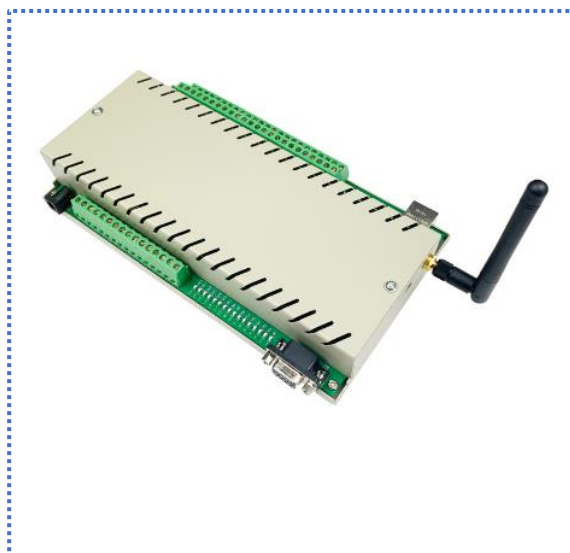
## Specification & Parameter

|                     |                                   |
|---------------------|-----------------------------------|
| Product Name:       | KC868-H16w Smart Relay Controller |
| Product Model:      | KC868-H16w                        |
| Product Size:       | 272*117*40mm                      |
| Product weight:     | 0.78kg                            |
| Working Voltage:    | DC 12V                            |
| Material:           | Fire resistance ABS, metal shell  |
| Working Temp:       | -20℃ ~ +70℃                       |
| Working Humidity:   | 20%RH ~ 80%RH                     |
| Output Load:        | Each 250V/10A                     |
| Communication mode: | Ethernet/RS232                    |
| Input port qty:     | 8 ports                           |
| Output port qty:    | 16 ports                          |
| Output power:       | No                                |



## Function

1. Supporting RS232 and Ethernet communication mode
2. Remote controlling the ON/OFF of 16 routes.
3. Supporting 8 ports input of sensor switching value.
4. Supporting secondary development
5. Supporting APP remote controlling
6. Supporting PC software remote/local controlling
7. Widely used for lights controlling of kinds of occasion (like Indoor, theater or Amusement Park etc) and switching of mechanical equipments, and management of the computers in the cyber bar and so on.



# KC868-Hx Smart Relay Controller

KC868-H8

## Specification & Parameter

|                     |                                  |
|---------------------|----------------------------------|
| Product Name:       | KC868-H8 Smart Relay Controller  |
| Product Model:      | KC868-H8                         |
| Product Size:       | 148*117*40mm                     |
| Product weight:     | 0.5kg                            |
| Working Voltage:    | DC 12V                           |
| Material:           | Fire resistance ABS, metal shell |
| Working Temp:       | -20℃ ~ +70℃                      |
| Working Humidity:   | 20%RH ~ 80%RH                    |
| Output Load:        | each 250V/10A                    |
| Communication mode: | Ethernet/RS232                   |
| Input port qty:     | 8 ports                          |
| Output port qty:    | 8 ports                          |
| Output power:       | 12V/9V                           |



## Function

1. Supporting RS232 and Ethernet communication mode
2. Remote controlling the ON/OFF of 8 routes.
3. Supporting 8 ports input of sensor switching value.
4. Supporting secondary development
5. Supporting APP remote controlling
6. Supporting PC software remote/local controlling
7. Widely used for lights controlling of kinds of occasion (like Indoor, theater or Amusement Park etc) and switching of mechanical equipments, and management of the computers in the cyber bar and so on.



# KC868-Hx Smart Relay Controller

KC868-H8w

## Specification & Parameter

|                     |  |
|---------------------|--|
| Product Name:       | KC868-H8w Smart Relay Controller                     |
| Product Model:      | KC868-H8w  |
| Product Size:       | 148*117*40mm   |
| Product weight:     | 0.5kg  |
| Working Voltage:    | DC 12V   |
| Material:           | Fire resistance ABS, metal shell, and rubber antenna |
| Working Temp:       | -20℃~+70℃  |
| Working Humidity:   | 20%RH~80%RH  |
| Output Load:        | each 250V/10A  |
| Communication mode: | Wi-Fi/RS232  |
| Input port qty:     | 8 ports  |
| Output port qty:    | 8 ports  |
| Output power:       | 12V/9V   |



## Function

1. Supporting RS232 and Wi-Fi communication mode
2. Remote controlling the ON/OFF of 8 routes.
3. Supporting 8 ports input of sensor switching value.
4. Supporting secondary development
5. Supporting APP remote controlling
6. Supporting PC software remote/local controlling
7. Widely used for lights controlling of kinds of occasion (like Indoor, theater or Amusement Park etc) and switching of mechanical equipments, and management of the computers in the cyber bar and so on.



# KC868-Hx Smart Relay Controller

KC868-H4

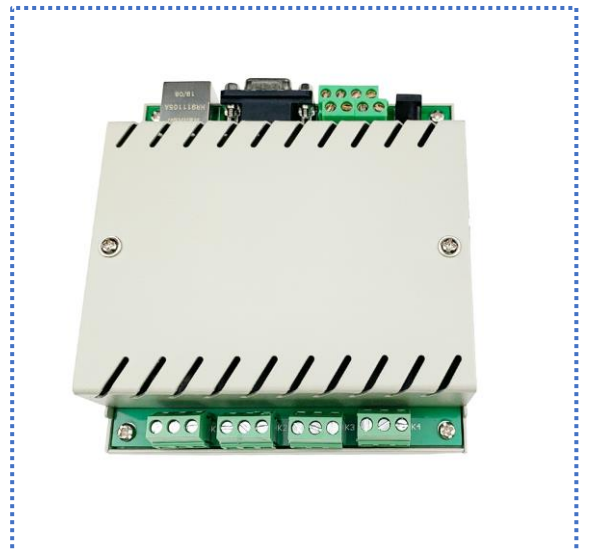
## Specification & Parameter

|                     |                                  |
|---------------------|----------------------------------|
| Product Name:       | KC868-H4 Smart Relay Controller  |
| Product Model:      | KC868-H4                         |
| Product Size:       | 108*117*40mm                     |
| Product weight:     | 0.4kg                            |
| Working Voltage:    | DC 12V                           |
| Material:           | Fire resistance ABS, metal shell |
| Working Temp:       | -20℃ ~ +70℃                      |
| Working Humidity:   | 20%RH ~ 80%RH                    |
| Output Load:        | Each 250V/10A                    |
| Communication mode: | Ethernet/RS232                   |
| Input port qty:     | 4 ports                          |
| Output port qty:    | 4 ports                          |
| Output power:       | No                               |



## Function

1. Supporting RS232 and Ethernet communication mode
2. Remote controlling the ON/OFF of 4 routes.
3. Supporting 8 ports input of sensor switching value.
4. Supporting secondary development
5. Supporting APP remote controlling
6. Supporting PC software remote/local controlling
7. Widely used for lights controlling of kinds of occasion (like Indoor, theater or Amusement Park etc) and switching of mechanical equipments, and management of the computers in the cyber bar and so on.



# KC868-Hx Smart Relay Controller

KC868-H4w

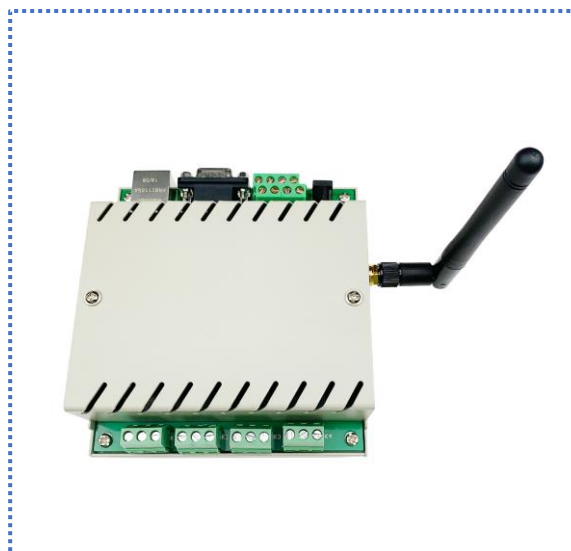
## Specification & Parameter

|                     |                                  |
|---------------------|----------------------------------|
| Product Name:       | KC868-H4w Smart Relay Controller |
| Product Model:      | KC868-H4w                        |
| Product Size:       | 108*117*40mm                     |
| Product weight:     | 0.4kg                            |
| Working Voltage:    | DC 12V                           |
| Material:           | Fire resistance ABS, metal shell |
| Working Temp:       | -20℃ ~ +70℃                      |
| Working Humidity:   | 20%RH ~ 80%RH                    |
| Output Load:        | Each 250V/10A                    |
| Communication mode: | Ethernet/RS232                   |
| Input port qty:     | 4 ports                          |
| Output port qty:    | 4 ports                          |
| Output power:       | No                               |



## Function

1. Supporting RS232 and Ethernet communication mode
2. Remote controlling the ON/OFF of 4 routes.
3. Supporting 8 ports input of sensor switching value.
4. Supporting secondary development
5. Supporting APP remote controlling
6. Supporting PC software remote/local controlling
7. Widely used for lights controlling of kinds of occasion (like Indoor, theater or Amusement Park etc) and switching of mechanical equipments, and management of the computers in the cyber bar and so on.



# KC868-Hx Smart Relay Controller

## KC868-H2

### Specification & Parameter

|                     |                                  |
|---------------------|----------------------------------|
| Product Name:       | KC868-H2 Smart Relay Controller  |
| Product Model:      | KC868-H2                         |
| Product Size:       | 73*117*40mm                      |
| Product weight:     | 0.3kg                            |
| Working Voltage:    | DC 12V                           |
| Material:           | Fire resistance ABS, metal shell |
| Working Temp:       | -20℃~+70℃                        |
| Working Humidity:   | 20%RH~80%RH                      |
| Output Load:        | Each 250V/10A                    |
| Communication mode: | Ethernet/RS232                   |
| Input port qty:     | No                               |
| Output port qty:    | 2 ports                          |
| Output power:       | No                               |



### Function

1. Supporting RS232 and Ethernet communication mode
2. Remote controlling the ON/OFF of 2 routes.
3. Supporting 8 ports input of sensor switching value.
4. Supporting secondary development
5. Supporting APP remote controlling
6. Supporting PC software remote/local controlling
7. Widely used for lights controlling of kinds of occasion (like Indoor, theater or Amusement Park etc) and switching of mechanical equipments, and management of the computers in the cyber bar and so on.



# KC868-Hx Smart Relay Controller

KC868-H2w

## Specification & Parameter

|                     |                                  |
|---------------------|----------------------------------|
| Product Name:       | KC868-H2w Smart Relay Controller |
| Product Model:      | KC868-H2w                        |
| Product Size:       | 73*117*40mm                      |
| Product weight:     | 0.3kg                            |
| Working Voltage:    | DC 12V                           |
| Material:           | Fire resistance ABS, metal shell |
| Working Temp:       | -20℃ ~ +70℃                      |
| Working Humidity:   | 20%RH ~ 80%RH                    |
| Output Load:        | Each 250V/10A                    |
| Communication mode: | Ethernet/RS232                   |
| Input port qty:     | No                               |
| Output port qty:    | 2 ports                          |
| Output power:       | No                               |



## Function

1. Supporting RS232 and Ethernet communication mode
2. Remote controlling the ON/OFF of 2 routes.
3. Supporting 8 ports input of sensor switching value.
4. Supporting secondary development
5. Supporting APP remote controlling
6. Supporting PC software remote/local controlling
7. Widely used for lights controlling of kinds of occasion (like Indoor, theater or Amusement Park etc) and switching of mechanical equipments, and management of the computers in the cyber bar and so on.

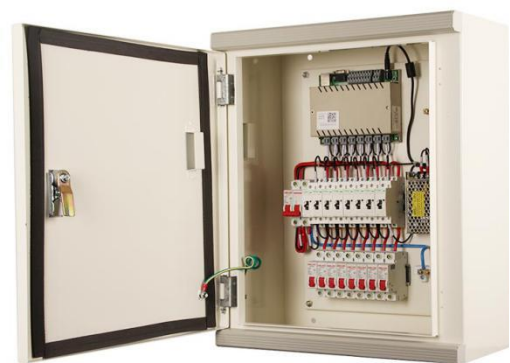


# KC868-Hx Smart Relay Controller

## KC868-Hx Power Distributor Box

### Specification & Parameter

|                          |  |
|--------------------------|--|
| Product Name:            | KC868-Hx Power Distributor Box   |
| Product Model:           | KC868-H8/H32 220V<br>KC868-H8/H32 380V<br>KC868-H8w/H32w 220V<br>KC868-H8w/H32w 380V |
| Product Size (standard): | 50*40*20cm or customized   |
| Gross Weight:            | 13kg   |
| Voltage:                 | 200V/AC~250V/AC  |
| Box material:            | 1.2mm thick quality steel plate  |
| Working Temp:            | 0°C ~ +60°C  |
| Working Humidity:        | 25%RH ~ 60%RH  |
| Internet mode:           | Wired Cable  |
| Communicate mode:        | Remote or Local controlling  |



# KC868 Smart Gateway

KC868-G

## Specification & Parameter

|                     |  |
|---------------------|--|
| Product Name:       | KC868-G Smart Home Gateway                 |
| Product Model:      | KC868-G                                    |
| Product Size:       | 100*100*30mm                               |
| Product Weight:     | 0.2kg                                      |
| Voltage:            | DC 5V                                      |
| Power :             | ∠0.2W                                      |
| Material:           | Fire resistance ABS, Black color           |
| Working Temp:       | 0℃～+70℃                                    |
| Working Humidity:   | 20%RH～90%RH                                |
| Internet mode:      | Wi-Fi                                      |
| Communicate mode:   | RF315, RF433, Infrared and Zigbee          |
| Wireless Frequency: | ASK 315Mhz+/-150KHz or 433.92MHz +/-150KHz |
| Zigbee Frequency:   | 2.4GHz                                     |



# KC868 Smart Gateway

KC868-S

## Specification & Parameter

|                     |   |
|---------------------|---|
| Product Name:       | KC868-S Smart Home Gateway                  |
| Product Model:      | KC868-S                                     |
| Product Size:       | 205*150*30mm                                |
| Product Weight:     | 0.2kg                                       |
| Voltage:            | DC 9V                                       |
| Power:              | 0.5W  |
| Working Temp:       | 0°C ~ +60°C                                 |
| Working Humidity:   | 10%RH ~ 95%RH                               |
| Internet mode:      | Wired Cable                                 |
| Communicate mode:   | RF315, RF433, Zigbee and RS485              |
| Wireless Frequency: | ASK 315Mhz +/-150KHz or 433.92MHz +/-150KHz |
| Zigbee Frequency:   | 2.4GHz                                      |



# Wireless Sensor

## KC-ZSE-101 Wireless Door Magnet Sensor

### Specification & Parameter

|                            |                             |
|----------------------------|-----------------------------|
| Product Name:              | Wireless Door Magnet Sensor |
| Product Model:             | KC-ZSE-101                  |
| Power supply:              | DC 3V (2xAAA battery)       |
| Standby Power:             | 15uW                        |
| Working Frequency:         | 2405-2480MHz                |
| Receiving Sensitivity:     | -97dBm                      |
| Communication Distance:    | 100m                        |
| Network Distance:          | 50m                         |
| Protocol:                  | Zigbee HA                   |
| Working Temperature Range: | -10℃~+55℃                   |
| Detection Range:           | >15mm                       |
| Detection Size:            | 76*36.6*16.5mm              |
| Magnet Size:               | 76*13.9*16.5mm              |





# Wireless Sensor

## KC-ZSE-103 Wireless Human Infrared Sensor

### Specification & Parameter

|                            |                                |
|----------------------------|--------------------------------|
| Product Name:              | Wireless Human Infrared Sensor |
| Product Model:             | KC-ZSE-103                     |
| Power supply:              | DC 3V (one CR123A battery)     |
| Standby Power:             | $\leq 15\mu\text{W}$           |
| Alarm Current:             | $\leq 30\text{mA}$             |
| Receiving Sensitivity:     | -97dBm                         |
| Communication Distance:    | 100m                           |
| Network Distance:          | 50m                            |
| Protocol:                  | Zigbee HA                      |
| Working Temperature Range: | -10°C ~ +50°C                  |
| Detection Range:           | 9~12m                          |
| Installation Height:       | 2.1m                           |
| Dimension:                 | 65*65*28.5mm                   |



# Wired Sensor

## Wired Door Magnet Sensor

### Specification & Parameter

|                       |   |
|-----------------------|---|
| Dimension:            | 106*38*10mm<br>106*16*16mm<br>106*50*50mm         |
| Induction Distance:   | 50-70mm   |
| Switch Form:          | N/C, N/O and Converted                            |
| Electrical Parameter: | Max power 10W, Max Voltage 100V, Max Current 0.5A |
| Material:             | Zinc Alloy, silver gray                           |
| Lead Wire:            | 007UL#22AWG 550mm 380mm SS steel protective pipe  |
| Package:              | 1set/bag, 50sets/CTN, 18.0kg/CTN                  |
| Suitable:             | Rolling shutter door                              |



# Wired Sensor

## Wired Human Infrared Sensor

### Specification & Parameter

|                         |                                    |
|-------------------------|------------------------------------|
| Sensor Type:            | Imported high sensitive sensor     |
| Operating Voltage:      | 9v/DC~24v/DC                       |
| Product Category:       | Wired wide Angle                   |
| Installation:           | Wall hanging or Angle installation |
| Detection Angle:        | 110 °                              |
| Operating temperature:  | -10 °C ~ 50 °C                     |
| Environmental humidity: | 5%~95%RH                           |
| Product size:           | 89*52.5*38.5mm                     |

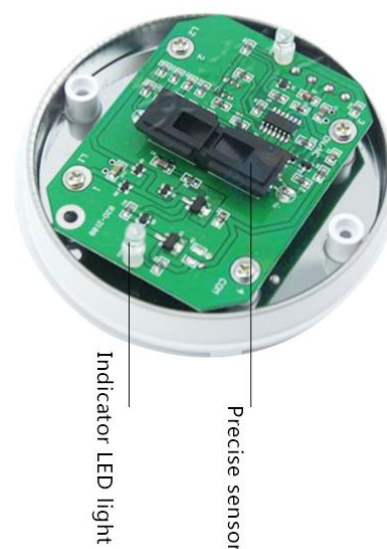


# Wired Sensor

## Wired Smoke Sensor

### Specification & Parameter

|                        |   |
|------------------------|---|
| Operating voltage:     | 12v/DC~24v/DC                           |
| Static current:        | $\leq 2\text{MA}$                       |
| Alarm current:         | $\leq 10\text{MA}$                      |
| Operating temperature: | -10 °C ~ 50 °C                          |
| Operating humidity:    | $\leq 95\%\text{RH}$                    |
| Alarm mode:            | Networked output / Led indication Alarm |
| Detection area:        | 20 m <sup>2</sup>                       |
| Sensitivity level:     | Level 1                                 |
| Alarm output:          | Relay output (N/O or N/C optional)      |
| Product size:          | $\phi 104*51\text{mm}$                  |



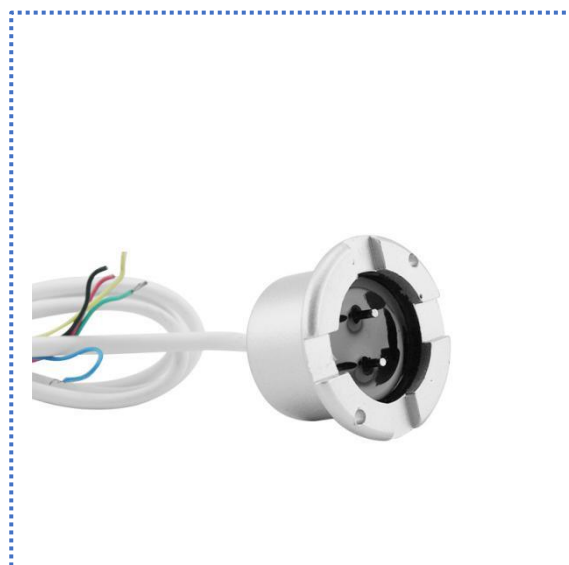
# Wired Sensor

## Wired Water Leakage Sensor

### Specification & Parameter

|                           |                           |
|---------------------------|---------------------------|
| Operating voltage:        | 12v/DC                    |
| Operating temperature:    | 0 °C ~ 50 °C              |
| Output form:              | Relay N/C, N/O optional   |
| Static power consumption: | < 0.3w                    |
| Alarm power consumption:  | ≤ 0.5w                    |
| Operating humidity:       | 20%~100%RH                |
| False positive rate:      | < 100ppm                  |
| Configuration:            | Standard 35lm probe cable |

| Terminals | Description   |
|-----------|---|
| Red       | Working power 12v/DC positive pole  |
| Black     | Working power 12v/DC negative pole  |
| Yellow    | N/O or N/C with J1 set output form, N/O as default ,no polarity difference      |
| Green     | No water, the two terminals resistance infinitely large, no polarity difference |



# Wired Sensor

## Wired Fire Sensor Module

### Specification & Parameter

|                  |  |
|------------------|--|
| Working Voltage: | 12V/DC   |
| Working current: | >150mA   |
| Load power:      | 250V/10A AC or 30V/10A DC                                  |
| Product size:    | 50*26*19mm   |
| Detect Angle:    | approx 60°   |
| Detect target:   | Fire or illuminate with wave length between 760nm to 110nm |

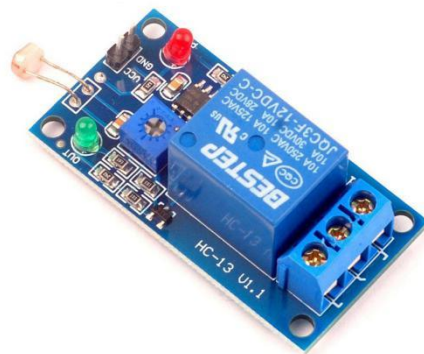


# Wired Sensor

## Wired Illuminate Sensor Module

### Specification & Parameter

Working Voltage: 12V/DC  
Working current:  $> 100\text{mA}$   
Load power: 220V/10A AC or 30V/10A DC  
Product size: 50\*26\*19mm  
Detect Angle: approx  $60^\circ$

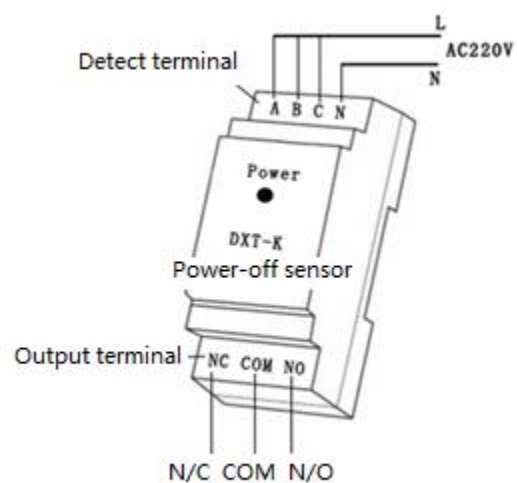


# Wired Sensor

## Wired Power Down Sensor

### Specification & Parameter

|                         |  |
|-------------------------|--|
| Working Voltage:        | 220V/AC or 380V/AC                           |
| Operating temperature:  | -30 °C ~+950 °C                              |
| Operating humidity:     | ≤ 90%RH                                      |
| Product Size:           | 86*36*58mm                                   |
| High-voltage isolation: | >1500V between detector and trigger terminal |





# Wired Sensor

## Wired Temperature & Humidity controller detector

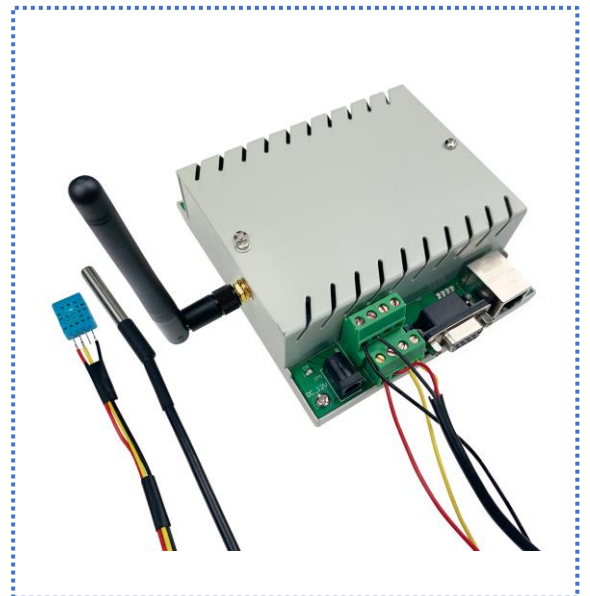
### Specification & Parameter

|                     |                                  |
|---------------------|----------------------------------|
| Product Name:       | Wired T & H controller detector  |
| Product Model:      | KC868-Env                        |
| Product Size:       | 108*117*40mm                     |
| Product weight:     | 0.4kg                            |
| Working Voltage:    | DC 12V                           |
| Material:           | Fire resistance ABS, metal shell |
| Temperature:        | -55℃ ~ +125℃                     |
| Working Humidity:   | 20%RH ~ 90%RH                    |
| Output Load:        | Each 250V/10A                    |
| Communication mode: | Ethernet/RS232                   |
| Relay Max Power:    | 2200W/gang                       |



### Function

1. 1 channel of Temperature & Humidity sensor.
2. You can see Temperature & Humidity data (By Month, Week, Hour) on mobile phone.
3. Support RS232 and Ethernet network, Read Temperature & Humidity by RS232 or LAN network.
4. Temperature & Humidity data auto upload to server periodically.
5. There are 4 relay switch, program control by RS232 or Ethernet.
6. It can auto control with KC868-Hx controller by Temperature & Humidity set value.

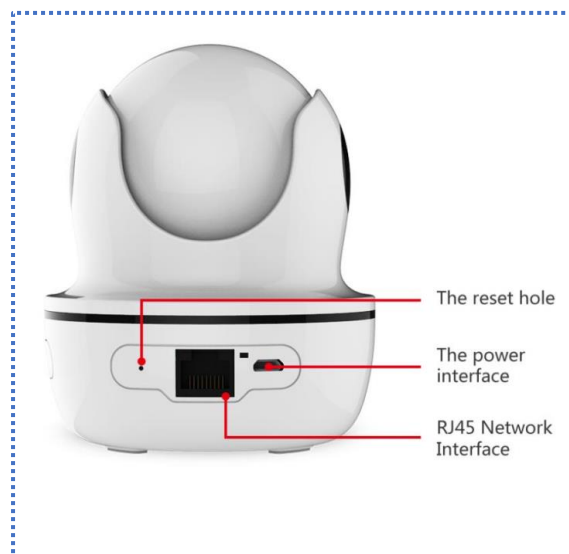
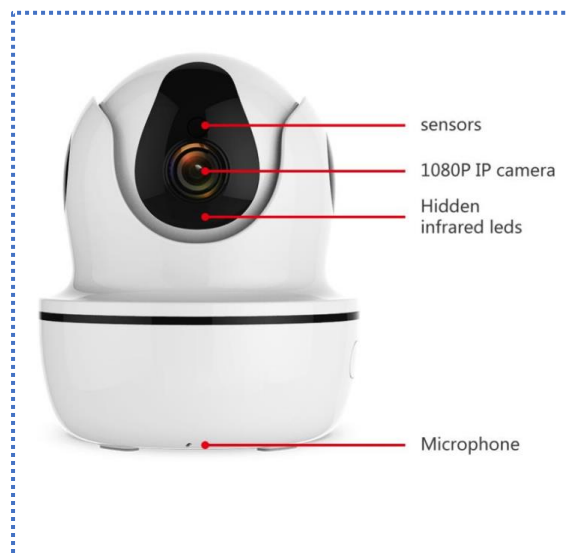


# IP Camera

## Mini Camera

### Specification & Parameter

|                              |                              |
|------------------------------|------------------------------|
| Installation:                | Normal                       |
| Supported Operating Systems: | Windows 7,8,10,XP, Vista     |
| TF Card:                     | 128G TF Card                 |
| Lens (mm):                   | 3.6mm                        |
| High Definition:             | 1080P (Full-HD)              |
| IS customized:               | Yes                          |
| Dimensions (L x W x D)(mm):  | 184x114x102 mm               |
| Model Number:                | Infrared                     |
| Technology:                  | DC5V                         |
| Power Supply (V):            | RJ-45 10/100Mb Ethernet Slot |
| Network Interface:           | 2MP                          |
| Megapixels:                  | Normal                       |
| Power Supply:                | IOS & Android                |
| Supported Mobile Systems:    | 110°                         |
| Viewing Angle:               | Vandal-proof                 |
| Special Features:            | CMOS                         |
| Sensor:                      | IP Camera                    |
| Type:                        | KinCony                      |
| Brand Name:                  | None                         |
| Audio Output:                | 5-10M                        |
| IR Distance (m):             | Sony                         |
| Sensor Brand:                | Wifi                         |
| Connectivity: Wifi           | 2.9W                         |
| Power Consumption(W):        | Mini Camera                  |
| Style:                       | None                         |
| Storage:                     | H.264                        |
| Video Compression Format:    | Ceiling                      |
| Wall Bracket:                | White                        |



### Function

1. Full HD image 2.0MP, triple video stream to be selected as wish
2. Used with a high quality optical lens to capture every detail precisely
3. Hua wei Hisilicon Smart Chip H.264+compressed format
4. WIFI connection fast. One key WIFI connection, no wiring, easy to complete installation
5. Two-way audio, viewing and talking remotely in real time
6. 360 degree full viewing
7. Infrared night clear vision, 6 LED lights, viewing clearly in darkness same as the day  
IR night vision distance is 5m to 10m
8. Remote view with Kincony smart system, one Kincony APP control and view.

# IP Camera

## Dome Camera

### Specification & Parameter

|                              |                          |
|------------------------------|--------------------------|
| Installation:                | Normal                   |
| Supported Operating Systems: | Windows 7,8,10,XP, Vista |
| TF Card:                     | 128G TF Card             |
| Lens (mm):                   | 3.6mm                    |
| High Definition:             | 720P (Full-HD)           |
| IS customized:               | Yes                      |
| Dimensions (L x W x D)(mm):  | 200x180x120 mm           |
| Model Number:                | Infrared                 |
| Technology:                  | AC110-220V               |
| Power Supply (V):            | Wi-Fi/802.11/b/g         |
| Network Interface:           | 1MP                      |
| Megapixels:                  | Normal                   |
| Power Supply:                | IOS & Android            |
| Supported Mobile Systems:    | 75°                      |
| Viewing Angle:               | Water-proof              |
| Special Features:            | CMOS                     |
| Sensor:                      | IP Camera                |
| Type:                        | KinCony                  |
| Brand Name:                  | None                     |
| Audio Output:                | 10-15M                   |
| IR Distance (m):             | CMOS                     |
| Sensor Brand:                | IP/Network Wireless      |
| Connectivity:                | 7W                       |
| Power Consumption (W):       | Dome Camera              |
| Style:                       | None                     |
| Storage:                     | H.264                    |
| Video Compression Format:    | Side                     |
| Wall Bracket:                | White                    |



### Function

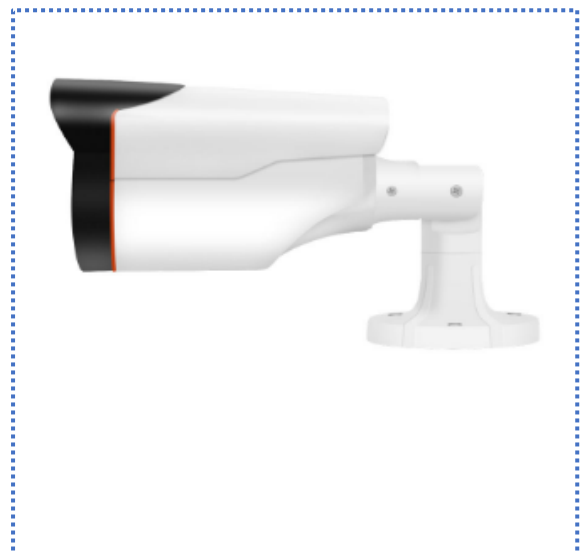
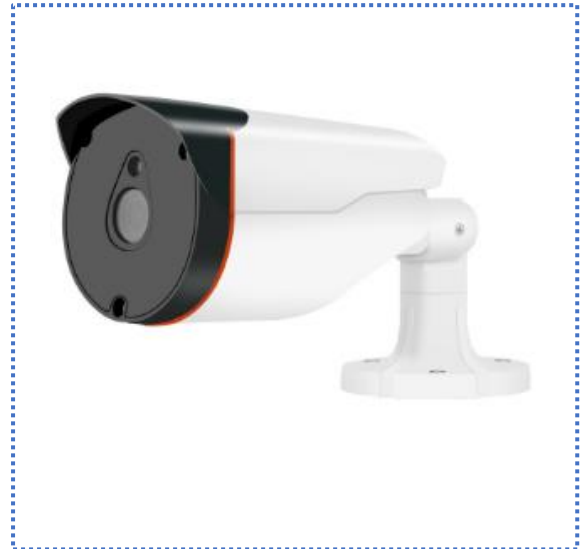
1. High-performance processor, efficient and stable
2. Aluminum exterior materials, anti-corrosion, sun, dust.
3. 720P HD, better picture quality, further vision
4. IP66 super dustproof and waterproof, no matter windy, raining, or sand storming
5. Just one network cable, no more wiring, easy to operate.
6. ONVIF Protocol, universal protocol, enhanced protocol interoperability
7. Pan-Tilt control, remotely control camera Pan Tilt, to view any angle you want
8. Multi-stream 720P, VGA, QVGA
9. Remote view with Kincony smart system, one Kincony APP control and view

# IP Camera

## Bullet Camera

### Specification & Parameter

|                              |                              |
|------------------------------|------------------------------|
| Installation:                | Normal                       |
| Supported Operating Systems: | Windows 7,8,10,XP, Vista     |
| TF Card:                     | 128G TF Card                 |
| Lens (mm):                   | 4mm                          |
| High Definition:             | 2.0 Megapixels               |
| IS customized:               | Yes                          |
| Dimensions (L x W x D)(mm):  | 205x107x78 mm                |
| Model Number:                | Indoor/Outdoor               |
| Technology:                  | Infrared                     |
| Power Supply (V):            | DC12V                        |
| Network Interface:           | RJ-45 10/100Mb Ethernet Slot |
| Megapixels:                  | 2MP                          |
| Power Supply:                | Normal                       |
| Supported Mobile Systems:    | IOS & Android                |
| Viewing Angle:               | 90°                          |
| Special Features:            | Vandal-proof                 |
| Sensor:                      | CMOS                         |
| Type:                        | IP Camera                    |
| Brand Name:                  | KinCony                      |
| Audio Output:                | None                         |
| IR Distance (m):             | 15M                          |
| Sensor Brand:                | Sony                         |
| Connectivity: Wifi           | Wifi                         |
| Style:                       | Mini Camera                  |
| Storage:                     | None                         |
| Video Compression Format:    | H.264                        |
| Wall Bracket:                | Ceiling                      |
| Color:                       | White                        |



### Function

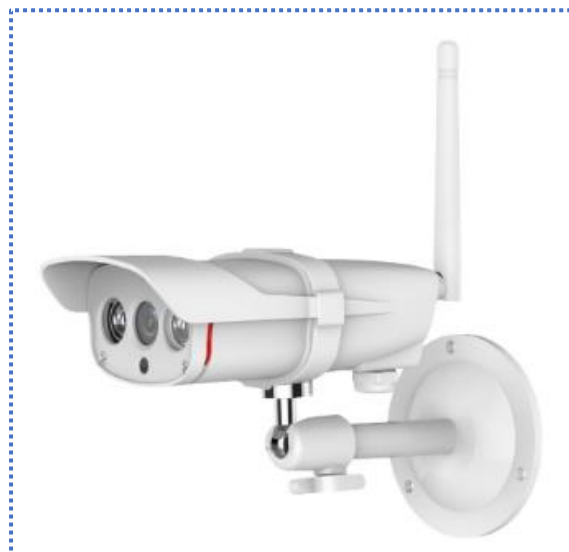
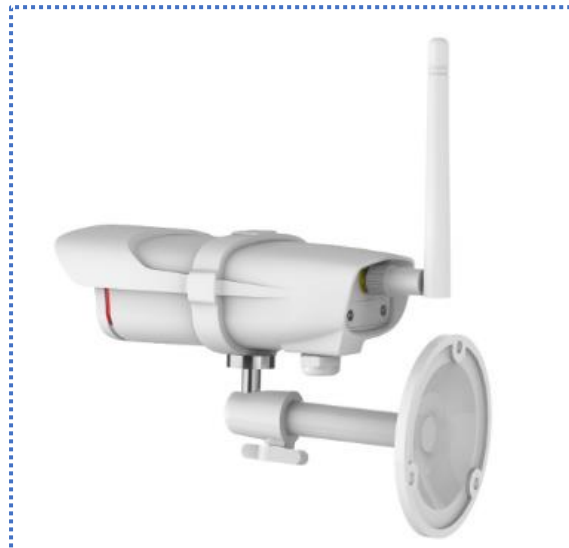
1. High quality remote monitoring, outdoor waterproof camera
2. Working in harsh environments
3. H.264 high quality image
4. POE no power required, only one cable needed.
5. Motion detection burglar alarm
6. Monitor your family and shop with your phone and computer
7. Hisilicon smart chip, High performance, low energy consumption, faster operation
8. Remote view with Kincony smart system, one Kincony APP control and view.

# IP Camera

## Bullet Camera

### Specification & Parameter

|                              |                              |
|------------------------------|------------------------------|
| Installation:                | Normal                       |
| Supported Operating Systems: | Windows 7,8,10,XP, Vista     |
| TF Card:                     | 128G TF Card                 |
| Lens (mm):                   | 4mm                          |
| High Definition:             | 1080P (Full-HD)              |
| IS customized:               | Yes                          |
| Dimensions (L x W x D)(mm):  | 200x180x120 mm               |
| Model Number:                | Outdoor                      |
| Technology:                  | Infrared                     |
| Power Supply (V):            | DC5V                         |
| Network Interface:           | RJ-45 10/100Mb Ethernet Slot |
| Megapixels:                  | 2MP                          |
| Power Supply:                | Normal                       |
| Supported Mobile Systems:    | IOS & Android                |
| Viewing Angle:               | 90°                          |
| Special Features:            | Vandal-proof                 |
| Sensor:                      | CMOS                         |
| Type:                        | IP Camera                    |
| Brand Name:                  | KinCony                      |
| Audio Output:                | None                         |
| IR Distance (m):             | 10-15M                       |
| Connectivity: Wi-Fi          | Wi-Fi                        |
| Power Consumption (W):       | 6W                           |
| Style:                       | Bullet Camera                |
| Storage:                     | None                         |
| Video Compression Format:    | H.264                        |
| Wall Bracket:                | Ceiling                      |
| Color:                       | White                        |



### Function

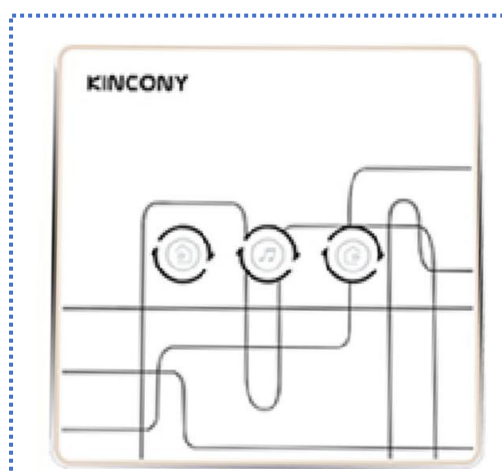
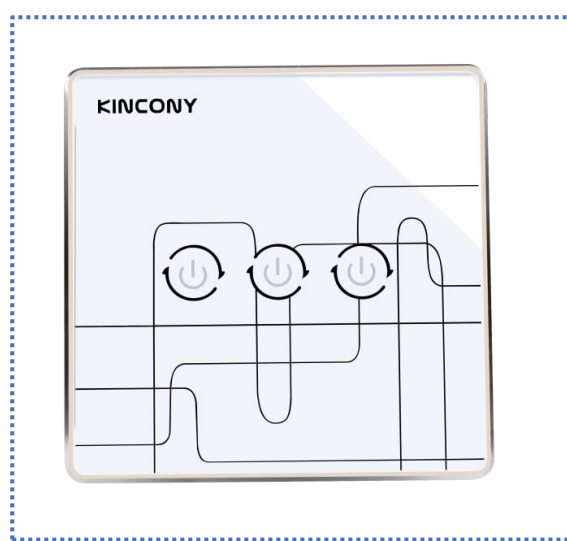
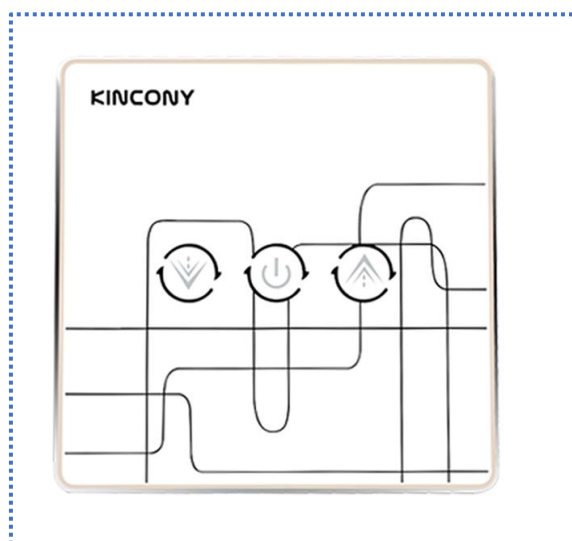
1. Super Clear Waterproof network camera
2. Two high-power infrared lights make the night surveillance image like day.
3. Professional security protection.
4. Motion captured within the detection area, starting snapshot, recording and sending alarm message to the connected phone.
5. Multiple devices at the same time to monitor
6. Support up to 4 users viewing video simultaneously.
7. Smooth surface, hard to rust, resist the erosion of rain and snow
8. Mini fuselage, delicate and small
9. Remote view with Kincony smart system, one Kincony APP control and view.

# Smart ZigBee Device

## Smart Zigbee Touch Switch

### Specification & Parameter

|                          |   |            |          |
|--------------------------|---|------------|----------|
| Product Name:            | Smart Zigbee Touch Switch                             |            |          |
| Product Model:           | KC-LNZ-305 one gang                                   | KC-LNZ-304 | Dimmer   |
|                          | KC-LNZ-306 two gang                                   | KC-LNQ-403 | Scenario |
|                          | KC-LNZ-307 three gang                                 |            |          |
| Product size:            | 86*86*30mm Standard 86 type                           |            |          |
| Product color:           | white panel, golden frame                             |            |          |
| Working Voltage:         | AC100~250V 50Hz/60Hz                                  |            |          |
| Working Temperature:     | 0℃~+40℃   |            |          |
| Communication Frequency: | 2.4GHz  |            |          |
| Load power:              | <1000W(Incandescent Lamp)                             |            |          |
|                          | <300W(Efficient light bulb, fluorescent lamp and LED) |            |          |
| Installation:            | live wire and null wire required                      |            |          |



# Smart Zigbee Device

## Smart Zigbee Curtain Motor

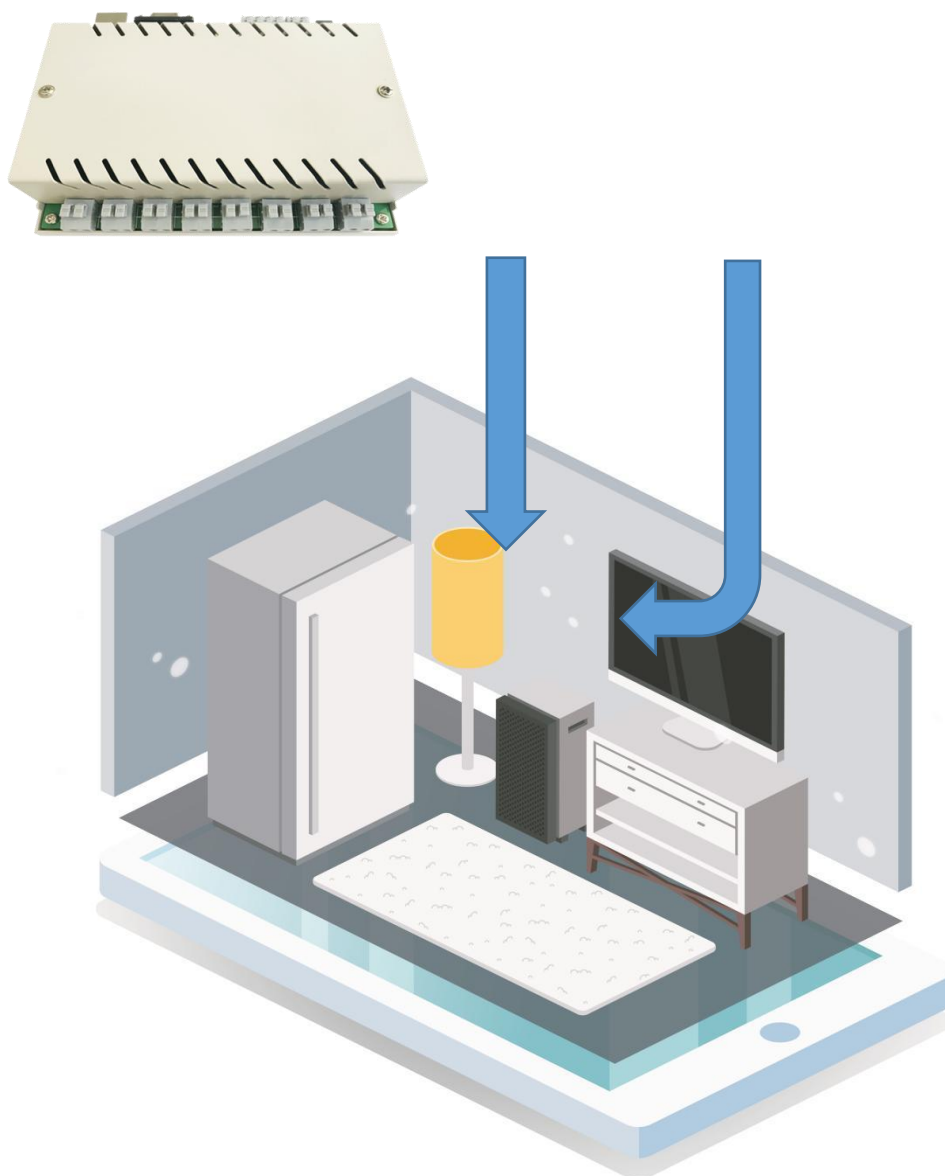
### Specification & Parameter

|                          |                            |
|--------------------------|----------------------------|
| Product Name:            | Smart Zigbee Curtain Motor |
| Product Model:           | KC-CMH-101                 |
| Working Voltage:         | AC220V 50Hz                |
| Working Power:           | 55W                        |
| Communication Frequency: | 2.4GHz                     |
| Mechanical Torque:       | 1.0N.m                     |
| System load:             | 45kg                       |
| Rated Speed:             | 120rpm                     |



# KC868-Hx Smart Relay Controller

Solutions: KC868-H8 / KC868-H8w / KC868-H32 / KC868-H32w



## Power Strip Intelligent Controlling Solution

At current market, the Wi-Fi socket has been popular, but some of them have low load capacity, the Wi-Fi signal is easy to be disturbed and other unstable factors, which affect the reliability of the device. When the number of Wi-Fi nodes is large, the Wi-Fi devices use to be off line as the router has limited number of terminal devices. However, when it is used the KC868-H8 device, the eight sockets can be controlled through a network cable connected to the internet, which greatly improves the stability of the control.



# KC868-Hx Smart Relay Controller

Solutions: Remote Access Controlling Solution



## Remote Access Controlling Solution

At present, the traditional door lock is being replaced by electronic access control system. There are magnet snap-in controls for office, and password & fingerprint locks for homes or hotels, as well as electromagnetic locks for renting houses. But, whatever any above mentioned locks, when somebody is visiting you, you can't open the door when you are not at home. However, with the remote access controlling system, you can easily control your home door remotely.

# KC868-Hx Smart Relay Controller

Solutions: Security and Intelligent Linkage Control Solution



## Security and Intelligent Linkage Control Solution

Security and intelligent linkage control solution are mainly composed of sensors and application equipments. Through the trigger of the sensor, the alarm message can be sent to the user's mobile phone, and some automatic control can be carried out at the same time. With the security system, you can know the real-time situation of the monitored place at any time.



### Cameras Restart Remote Controlling Solution

The network camera currently has a very wide application in the field of security. But the quality is different for some major brands in the market. Because the camera is transmitting a large amount of data in live time, when there is the influence of the unstable network, the camera usually is off line and even not working, which is such a bad thing.

Because most of the cameras are installed outdoors or even at a high place. At this station, the remote control and restart solution can conveniently help to solve the problems.



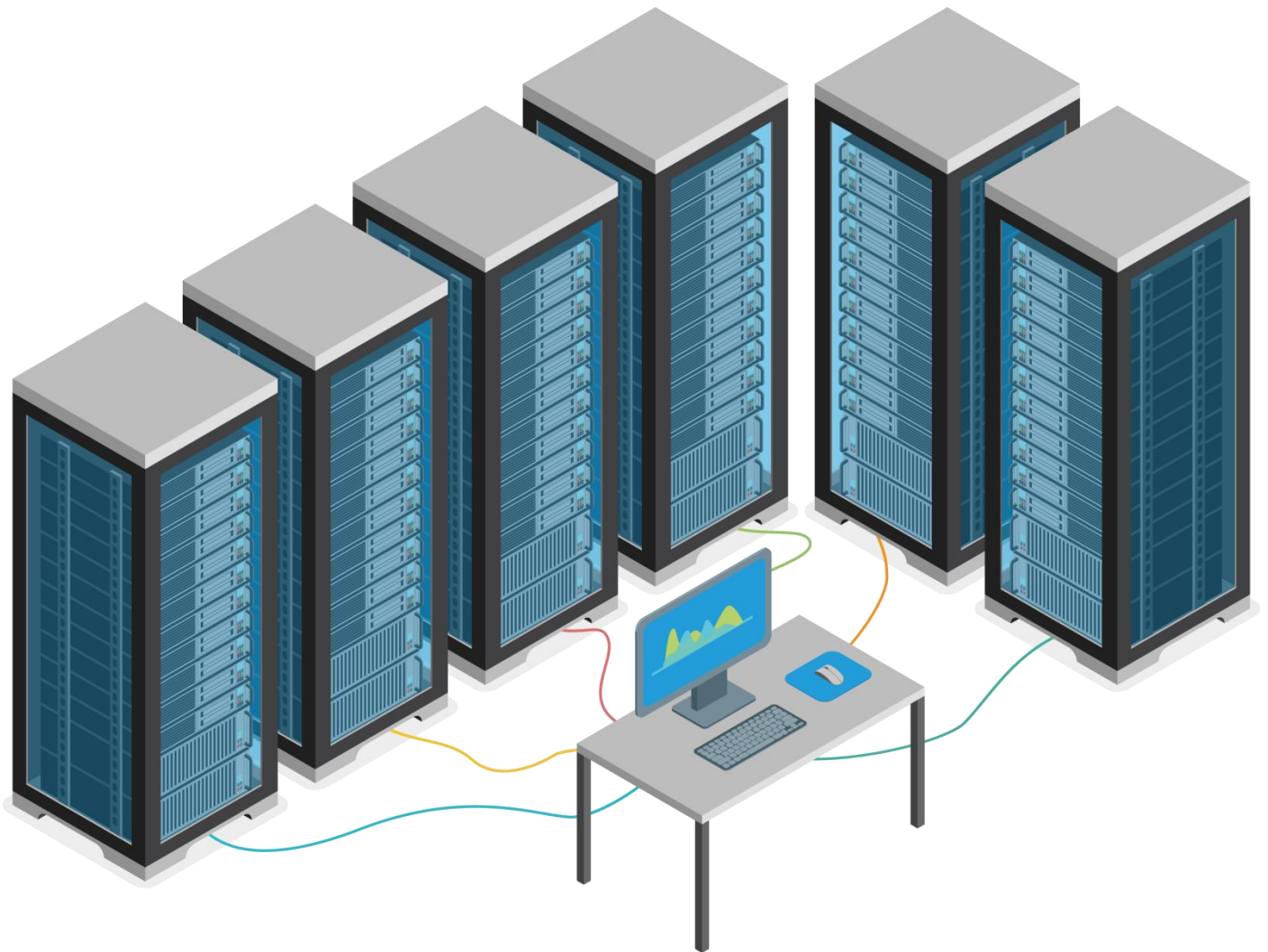
### Intelligent Power Distribution Box Solution

Intelligent power distribution box is composed of traditional leakage protector, air switch, AC contactor and KC868-H8. Compared with the traditional power distribution box, it is safer to cut off the strong power supply remotely, and it can save energy through the timing mode while controlling the equipments automatically for the factory or the enterprise.

By connecting security sensors, real-time grasp of the situation on the spot, more assured. Through the trigger of the sensor, the alarm message can be sent to the user through the mobile phone app, and some automatic control can be carried out at the same time. According to the power of the air switch and AC contactor, the controllable power load can reach to the requirements of the whole house, the whole floor and even the whole building.

# KC868-Hx Smart Relay Controller

## Solutions: Servers Restart Remote Controlling Solution



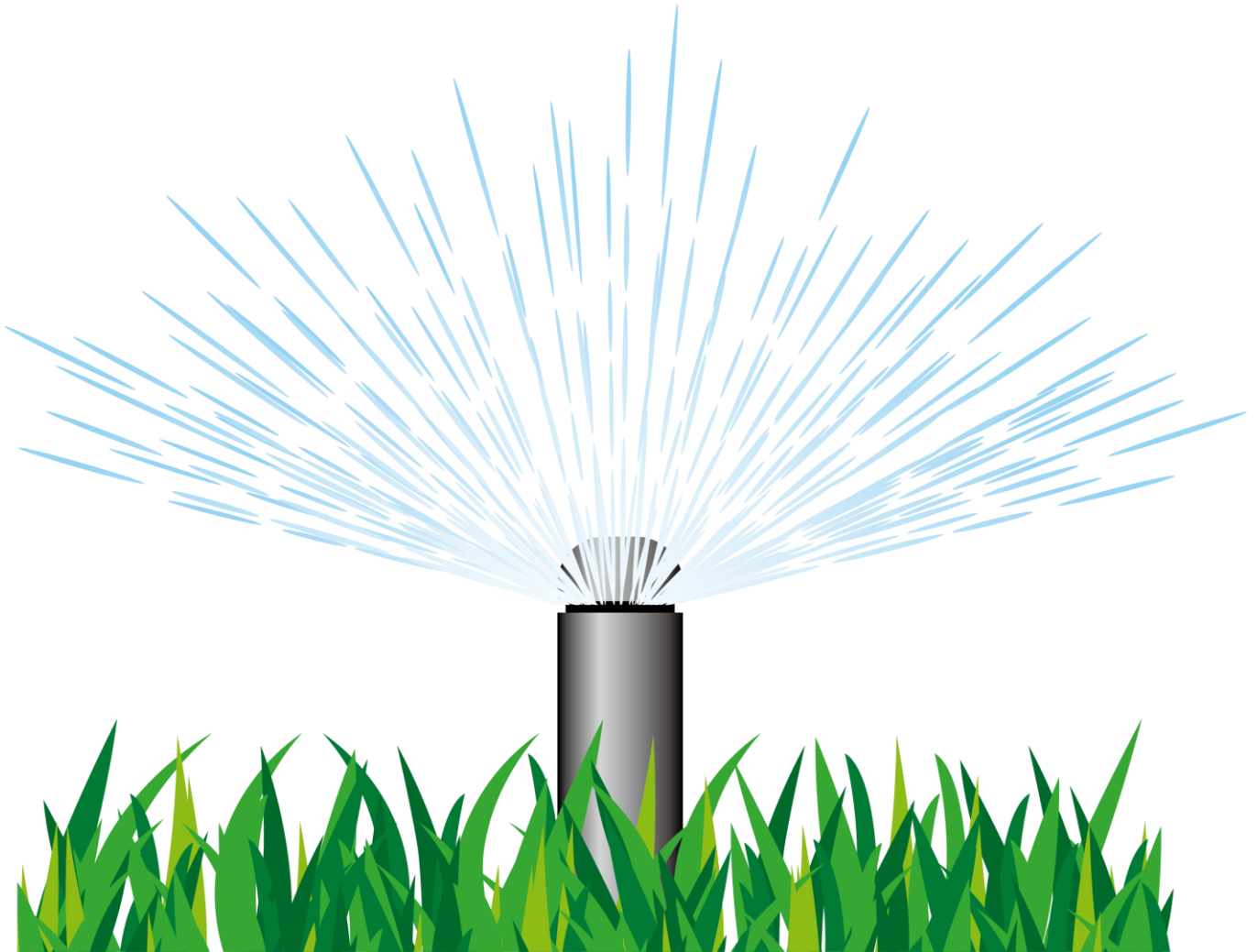
### Servers Restart Remote Controlling Solution

For a user who is hosting a server, it is a very bad thing if the server has a crash. Because we have to get someone to find the server for manual restart, and even personally carry out manual reset maintenance in the machine room.

The remote control and restart solution can conveniently solve this kind of problem, not only can the server be restarted remotely, but also the computer.

# KC868-Hx Smart Relay Controller

Solutions: Intelligent Remote Pumping & Irrigation Solution



## Intelligent Remote Pumping & Irrigation Solution

Intelligent irrigation remote controlling system consists of automatic controlling technology, communication technology, computer technology and so on. The system is mainly designed for daily irrigation control and management in fields such as farmland, garden, facility of agriculture and so on. By means of modern science and technology, the system can reduce the cost of manpower; improve the efficiency of automatic production and save water resources.

# KC868-Hx Smart Relay Controller

Solutions: Intelligent Lighting Control System Implementation Solution



## Intelligent Lighting Control System Implementation Solution

This Case will show us how to control the lighting with the device KC868-H8, and what kind of controlling ways.

---

Please contact .....**KINCONY** Corporation

▪Building 9# ShangKun Valley Center No.332 ChiHua Street HangZhou China  
[www.kincony.com](http://www.kincony.com)

**KINCONY**

©KinCony Corporation 2019

---

KinCony Product Catalog 2019-08 Specifications are subject to change without notice.